

**TRILUX**  
SIMPLIFY YOUR LIGHT.

## OFFICE WORK ENVIRONMENTS

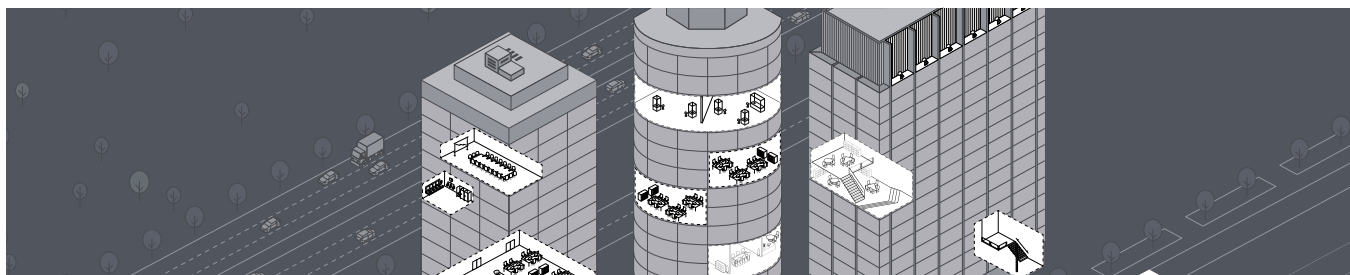
TOMORROW'S LIGHT FOR  
TODAY'S OFFICES





## Introduction

TRILUX Group – holistic expertise	Page 2
Office application	Page 4
Human Centric Lighting	Page 8
Quality	Page 10
Connectivity	Page 12



## Applications

Overview graphic: office areas	Page 14
Parking areas, paths and facades	Page 16
Outdoor and indoor entrance areas	Page 24
Corridors and stairways	Page 30
Exhibition areas	Page 34
Classic offices	Page 38
New Work	Page 44
Open Spaces	Page 46
Home Office	Page 50
Coworking spaces	Page 54
Meeting points	Page 58
Sanitary facilities	Page 62



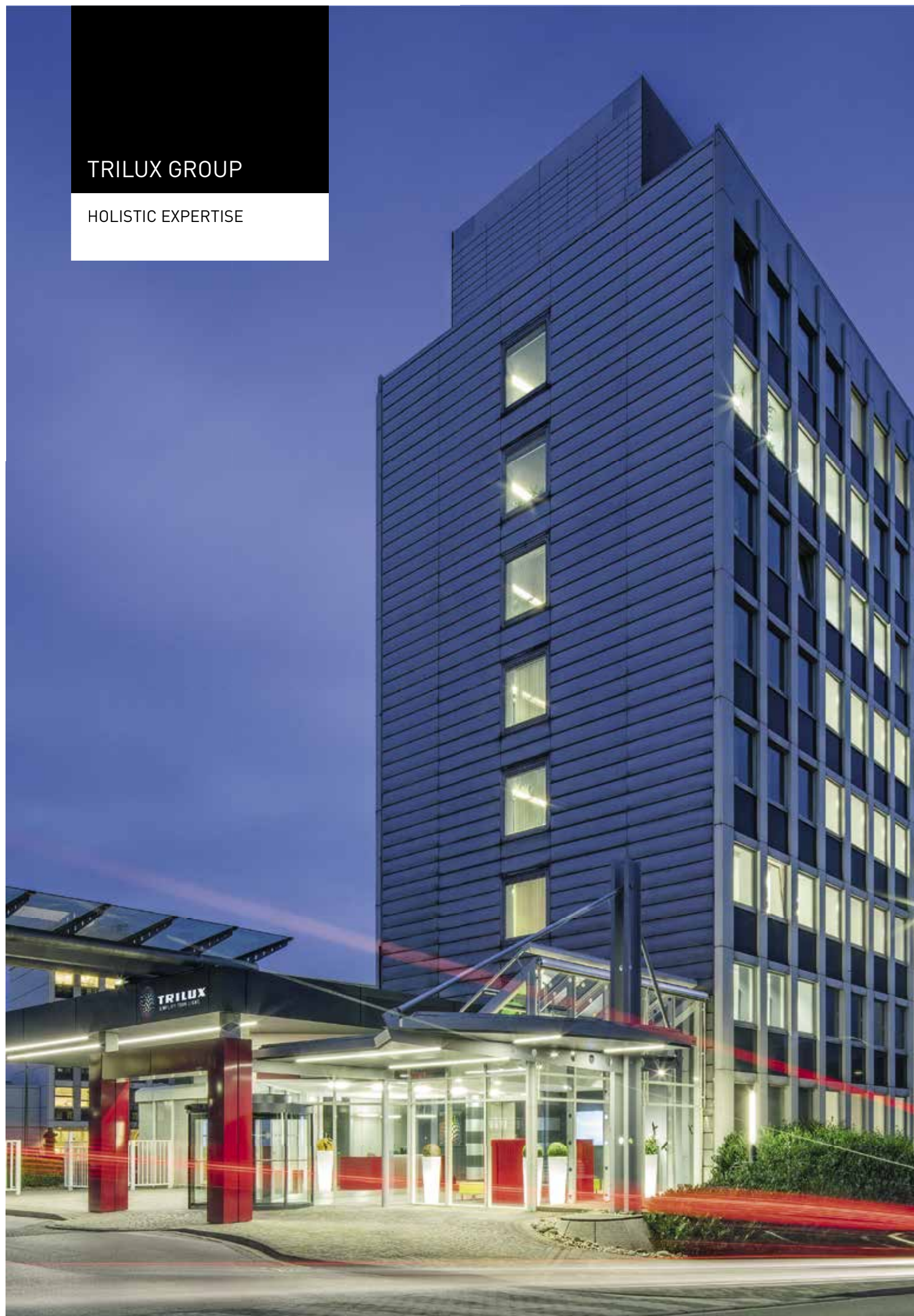
## Light management, services

Indoor light management	Page 66
Outdoor light management	Page 68
Lighting Solutions & Services	Page 70
TRILUX Akademie	Page 74
TRILUX Portal	Page 76
Product overview	Page 78



TRILUX GROUP

HOLISTIC EXPERTISE





TRILUX SIMPLIFY YOUR LIGHT represents the simplest and most reliable path to customised, energy-efficient and future-proof lighting solutions. In the dynamic and ever increasingly complex lighting market, customers are provided with optimal advice, ideal orientation and perfect light. To ensure this, TRILUX offers a wide portfolio of technologies and services as well as high-performance partners and companies in the TRILUX Group. The lighting specialist combines single components to create custom-designed complete solutions – always perfectly tailored to the customer's requirements and specific applications. In this way, complex and extensive projects can be simply and rapidly implemented from a single supplier.

The TRILUX Group has six production facilities in Europe and Asia and supports international customers via 33 subsidiaries and a large number of sales partners. The lighting division consists of the brands TRILUX SIMPLIFY YOUR LIGHT, Oktalite and Zalux. Associated companies are the ITZ (Innovation and Technology Centre), ICT, the online platform watt24 and the Smart City start-up eluminocity.



## OFFICE APPLICATION

TRILUX ILLUMINATES  
WORK ENVIRONMENTS



Digitalisation, demographic change, individuality and work-life balance are changing modern work structures as well as office design. Project work, networking and informal communication are increasingly shaping everyday office work and require new work and room concepts. This also increases the demands made on lighting as a decisive factor for productive work and motivated employees – both with classic office environments and flexible New Work concepts.



**Classic office environments** are characterised by spatial and functional divisions. These usually include:

- Open-plan offices
- Single or twin offices
- Meeting rooms

(see page 38)

With the options provided by intelligent light, accent light, light management, high quality of light, Human Centric Lighting (HCL) and modern luminaire design, these work areas can be optimised to achieve maximum comfort focused on the user.



The innovative office concepts of **New Work** focus on openness and flexible functional zones that promote communication, creativity and concentration. These include:

- Open spaces (see page 46)
- Home offices (see page 50)
- Coworking spaces (see page 54)
- Meeting points (see page 58)

Modern office lighting has to support changing room concepts and, the delineation of work zones, using accent lighting for example, as well as guarantee optimum lighting for individual tasks. In such cases the benefits of Human Centric Lighting (HCL) can be especially valuable.



## OFFICE APPLICATION

THE MOST IMPORTANT  
ASPECTS FOR LIGHTING  
IN OFFICES





Focusing on the future and placing people at the centre: modern office environments are changing the way we work thanks to connectivity, IoT solutions and Human Centric Lighting. As a holistic partner, TRILUX provides support with extensive services in all areas – and acts as a pioneer for the future of office lighting.



**Human Centric Lighting (HCL)**  
Good light must provide more than standard-compliant visual conditions. Light colour and lighting intensity influence people's mood, well-being and ability to concentrate. TRILUX HCL solutions are able to strengthen the human biological rhythm by orienting light colour and light intensity to the natural sequence of daylight. (see page 8)



**Quality**  
From material selection and design to the lighting technology assembled – TRILUX light solutions meet the highest demands in terms of quality of product, data, design and light. The office lighting solutions support work processes according to the specific workstation and requirement, taking into account individual worker needs and ensuring an atmosphere of well-being. (see page 10)



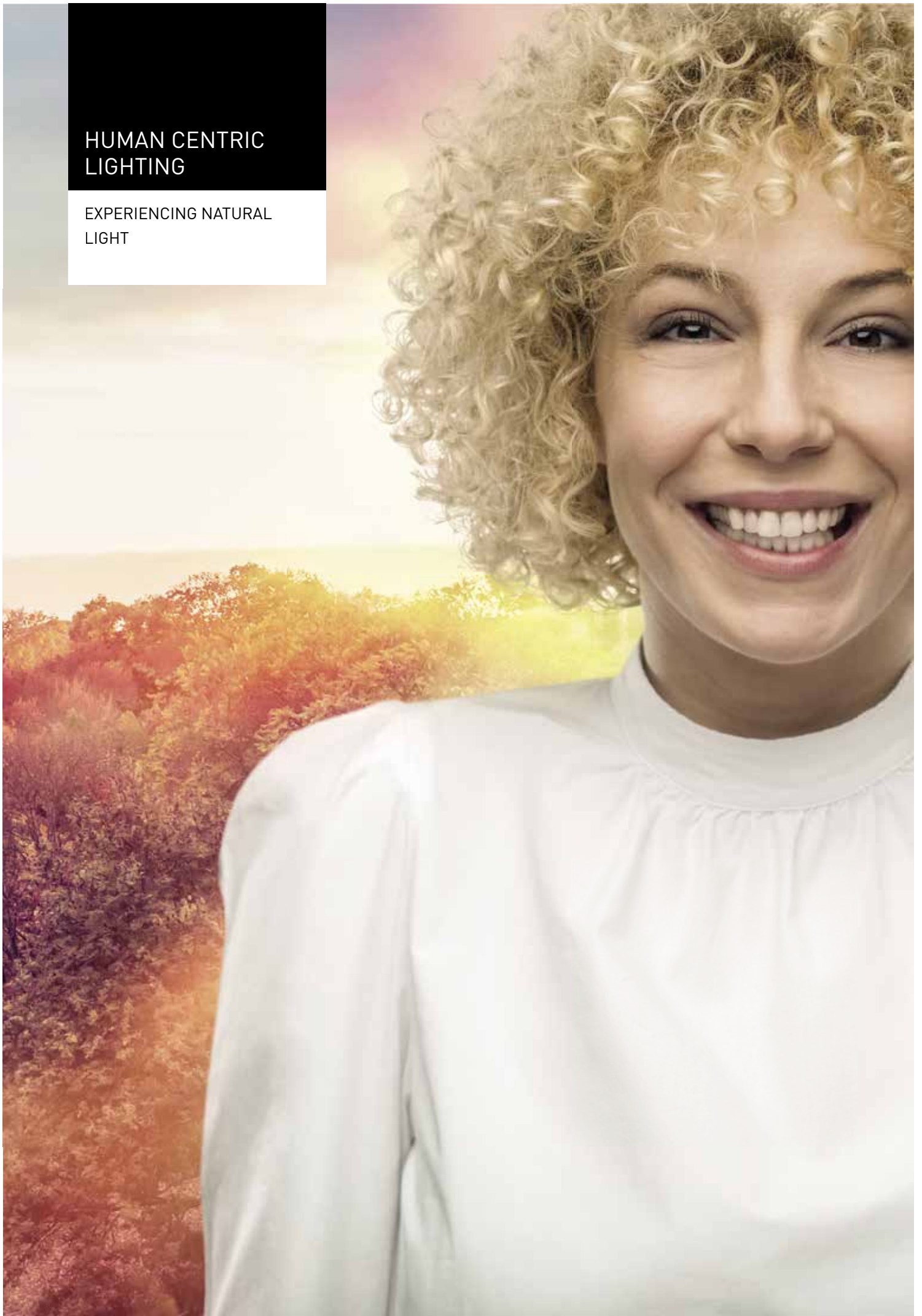
**Connectivity**  
Luminaires are progressing from classic light to intelligent data points and information communicators with diverse tasks – and thus assume a key role in the Internet of Things. Light solutions that intercommunicate and communicate with other systems open up limitless possibilities. (see page 12)



**Services**  
"TRILUX – SIMPLIFY YOUR LIGHT" represents the most simple path to intelligent, individual light. TRILUX provides comprehensive information and advice as well as integral service concepts for financing, project management and digital and technical services. (see page 70)

# HUMAN CENTRIC LIGHTING

EXPERIENCING NATURAL  
LIGHT



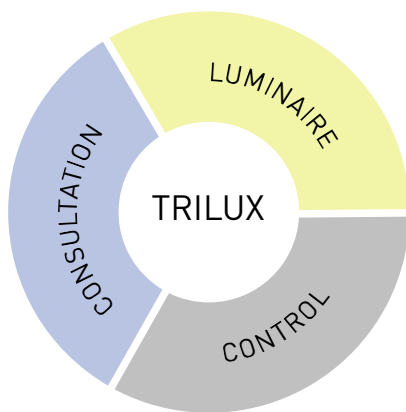


Light has many facets that need to be considered when designing future-proof lighting solutions. At TRILUX we offer important added value: we place people with their specific needs at the centre. For TRILUX customers this consistent targeting of the solution to the user is the foundation of good light.

Good light must provide more than just optimum visual conditions complying with appropriate standards. Light colour and lighting intensity for example influence mood, well-being and the capability to perform. The biological rhythm of people can also be improved by adapting the light colour and intensity of lighting to the natural course of daylight. This even occurs automatically with intelligent light control – the right light at the right time.

A Human Centric Lighting solution is always based on a professionally planned lighting concept where all components are precisely matched to customer requirements and the specific application. This enables highly performative, customised systems that optimally support people in their range of tasks. According to its brand promise of Simplify Your Light, TRILUX ensures that using such solutions is as simple as possible.

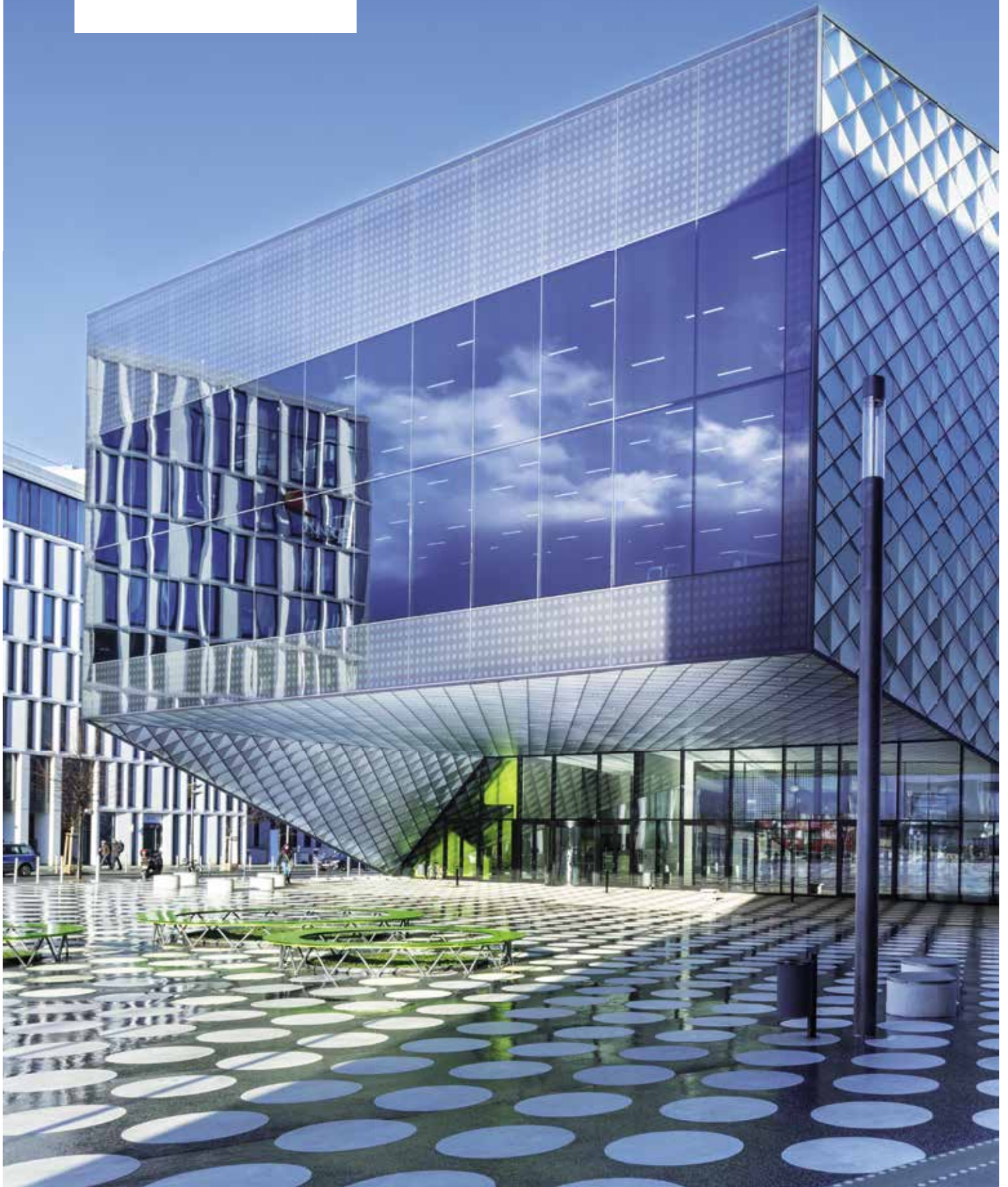
A TRILUX HCL lighting solution always consists of three components: the luminaire, the control and lighting consultation.



Only in this way do customers receive optimum advice, and light ideally adapted to their needs. TRILUX offers a wide portfolio of cutting-edge technologies and products to achieve this, and brings together single components to create customised, complete solutions.

QUALITY

MADE BY TRILUX





German engineering, customised solutions and innovative designs – all of this is expressed in 'Made by TRILUX'. TRILUX has always placed much value on high-class workmanship and products with maximum quality that adapt to the individual needs of users and the diverse range of applications. TRILUX offers not only standard solutions, but in close cooperation with the customer develops atmospheric and simultaneously functional lighting concepts complying to current standards. This is ensured by premium materials, in-house developed optics, extensive data records and outstanding efficiency levels. Made by TRILUX guarantees best quality across the board.

#### PRODUCT QUALITY



TRILUX represents customer-specific configurations, and develops products with and for its customers oriented precisely to their needs. As such, TRILUX offers market-compliant and future-proof lighting solutions matched to the specific requirements of the various applications.

#### DESIGN QUALITY



TRILUX lighting concepts adapt to the overall architectural concept of a building, complementing the architecture with good lighting. We develop our products in close cooperation with renowned lighting designers, and such products are regularly distinguished by winning design awards.

#### LIGHT QUALITY



TRILUX lighting solutions offer much more than just lighting compliant to standards. They can be adapted individually to very different needs, supporting the users in their daily work tasks.

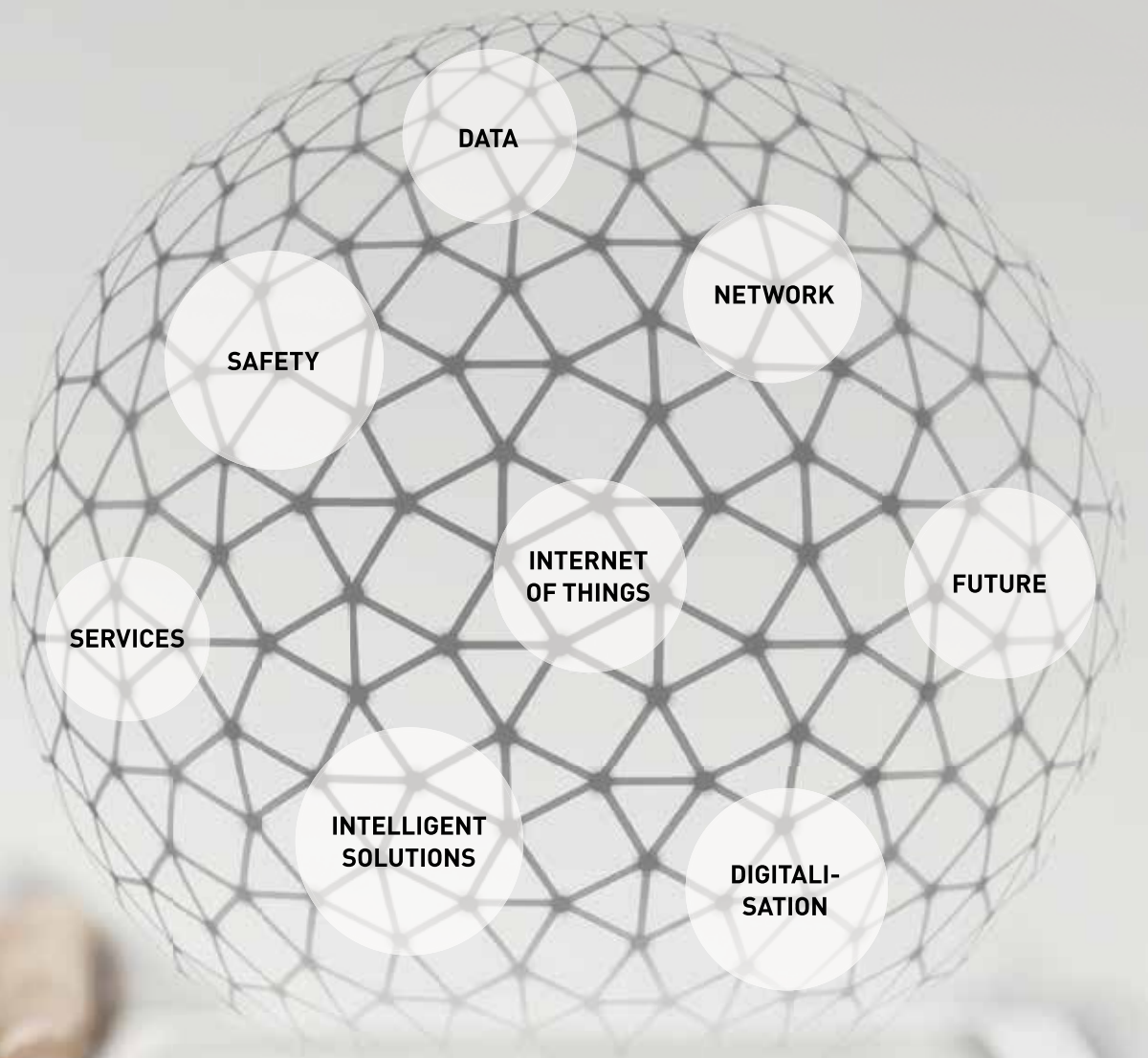
#### DATA QUALITY



TRILUX accompanies and drives forward the transformation in planning of buildings with BIM by providing extensive product documentation. Such documentation leads the way in the industry.

# CONNECTIVITY

FROM LIGHT POINT  
TO DATA NODE





### **From light point to data node**

The success of LED technology paved the way for the revolution of office lighting that has reached the next level today thanks to digitalisation and Internet of Things (IoT). The decisive component for implementing smart lighting concepts: connectivity.

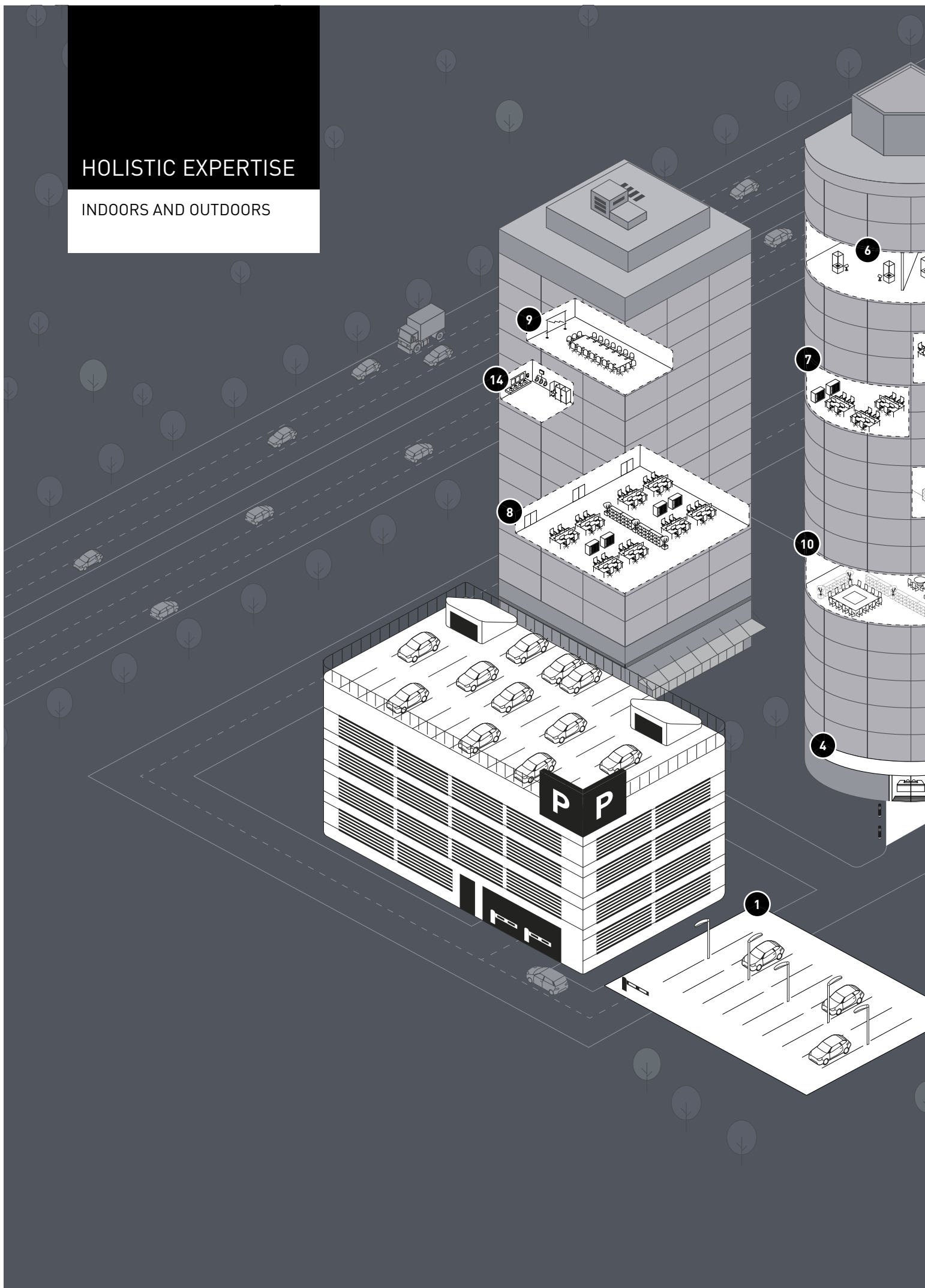
The future of light is networked. When various systems cooperate with each other in the IoT, undreamt-of potential for people and technology is created. Light points become data nodes, via which loudspeakers, Wi-Fi and smoke detectors will be able to communicate with each other in the future. Equipped with sensitive sensors, it will soon be possible to control luminaires with voice commands or gestures.

Using an intelligent control tool, lighting is already being transformed into a light-based personnel guidance system that automatically guides employees and customers to their desired destinations thanks to “forward-running” or “running” light. This central control unit will also provide an overview of important data such as energy costs, maintenance intervals and visitor flows. We are merely at the beginning of a profound technological transformation.

The user is the focus of this development. With regard to connectivity, TRILUX relies on comprehensive advice, simple handling and smart interfaces to achieve a smooth transformation. Our smart LiveLink light management system serves as the control point for the future's efficient and cost-effective lighting solutions. The user-friendly software enables a quick start to this pioneering field without the need for previous technical knowledge. In this way, TRILUX customers quickly and sustainably benefit from the technical innovations of a networked world.

# HOLISTIC EXPERTISE

INDOORS AND OUTDOORS







Custom-tailored lighting solutions are not only required in classic offices or in New Work environments. TRILUX always takes a holistic view with office buildings: our lighting concepts include both the interior and exterior of the building. On the following pages, lighting solutions for all applications are presented – for entrance areas, corridors, stairways, car parks or paths. This way, both technology and design are made from a single cast – and customers receive everything from a single source.

**1) PARKING AREAS,** page 18

**2) PATHS,** page 20

**3) FACADES,** page 22

**4) ENTRANCE AREAS,** page 24

**5) CORRIDORS AND STAIRWAYS,** page 30

**6) EXHIBITION AREAS,** page 34

**7) ) CLASSIC OFFICES,** page 38

**8) OPEN-PLAN OFFICES,** page 40

**9) MEETING ROOMS,** page 41

**10) OPEN SPACES,** page 46

**11) HOME OFFICE,** page 50

**12) COWORKING SPACES,** page 54

**13) MEETING POINTS,** page 58

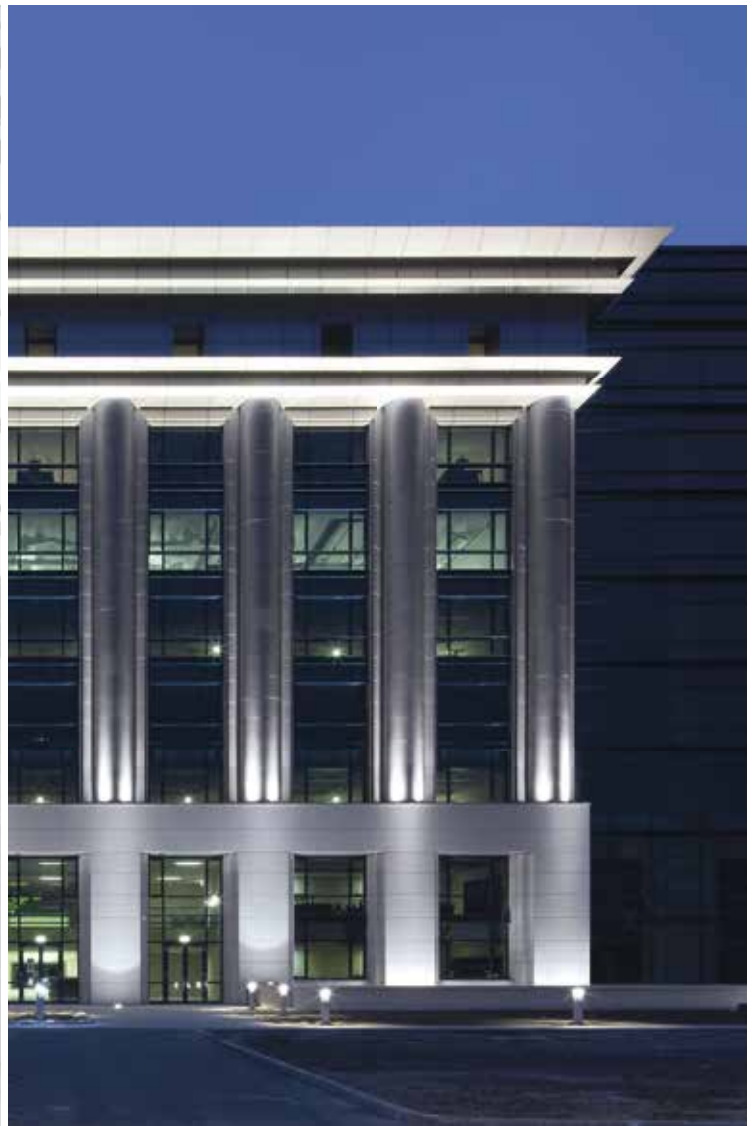
**14) SANITARY FACILITIES,** page 62

PARKING AREAS,  
PATHS AND  
FACADES

SAFETY BEYOND THE  
BORDERS OF BUILDINGS







### **Lighting on parking areas for greater safety and security**

Safety and orientation have top priority when illuminating parking areas and car parks. Resistance to extreme weather conditions is also a must. In this area, TRILUX luminaires score points with innovative lighting technology, high quality of light and robust constructions. This way, both visitors and employees easily find their way around and gain a positive initial impression at the same time. The function of running light also enables energy to be saved because light is only active where movement is detected.

### **Illuminated paths for a feeling of greater security**

Path lighting has the primary aim of safely and securely accompanying visitors and employees during hours of darkness. An elevated protection rating and good material quality are also the preconditions for resisting adverse weather conditions in the long run. Furthermore, luminaires should blend harmoniously into any architecture and complement outdoor concepts in terms of light, style and design. A task that TRILUX luminaires fulfil with distinction.

### **Accented facades for an attractive appearance**

Outdoor lighting that serves to showcase, not only to illuminate. Whether it comes to accenting architectural details or highlighting complete buildings and objects – TRILUX facilitates contemporary facade illumination with a variety of products that effectively meet requirements with high levels of energy efficiency. At the same time, visitors are provided with rapid and reliable orientation with the illumination of signage and entrance areas.

## PARKING AREAS

KEEPING A GOOD OVERVIEW





#### **Nextrema G3 LED**

Nextrema G3 LED, featuring a high quality die-cast aluminium body, is especially robust and provides highly reliable operation even in extreme conditions. Its long service life and high energy efficiency facilitate rapid payback of investment costs and therefore low overall operating costs.

[www.trilux.com/nextremag3](http://www.trilux.com/nextremag3)



#### **Lumantix LED**

From urban streets to parking lots and outdoor areas around buildings – the diverse post luminaires in the Lumantix LED series master almost any lighting task. They also score points with efficient lighting technology and attractive designs.

[www.trilux.com/lumantix-led](http://www.trilux.com/lumantix-led)



#### **ConStela LED**

Supporting columns with various heights, various luminaire heads and the option of using flexibly settable spots create unique light columns with the ConStela LED. The ConStela Configurator also enables individual modules to be quickly combined.

[www.trilux.com/constela](http://www.trilux.com/constela)



#### **Convvia LED**

The elliptical Convvia LED post-top luminaire achieves particularly good illumination of roads and squares thanks to innovative MLT<sup>10</sup> technology and computer-optimised free-form reflectors. With its compact, flat design it also blends ideally into any urban surroundings.

[www.trilux.com/convvia](http://www.trilux.com/convvia)



#### **Lumena Star 40/70 LED**

The Lumena Star 40/70 LED wide beam projector meets high safety and efficiency demands by generating glare-free light without disturbing light emissions, and by saving up to 40 % in energy compared to conventional lighting systems. Further savings potential is provided by optional features such as power reduction and light management systems.

[www.trilux.com/lumenastar](http://www.trilux.com/lumenastar)



#### **Lumega IQ 50/70/90 LED**

The newly developed optical systems of Lumega IQ LED post-top and bracket-mounted luminaires guarantee outstanding light distribution. Various MLT<sup>10</sup> (multi-lens technology) lenses and a wide range of luminaire luminous flux levels enable individual adaptations to building-specific lighting tasks.

[www.trilux.com/lumega iq](http://www.trilux.com/lumega iq)



#### **Cuvia 40/60 LED**

The modular design of the Cuvia LED provides maximum flexibility with luminous flux levels and optical systems. The post-top and bracket-mounted luminaires feature high efficiency levels and impress across-the-board, from purchase to operating costs and maintenance.

[www.trilux.com/cuvia40](http://www.trilux.com/cuvia40)  
[www.trilux.com/cuvia60](http://www.trilux.com/cuvia60)



#### **Viatana LED**

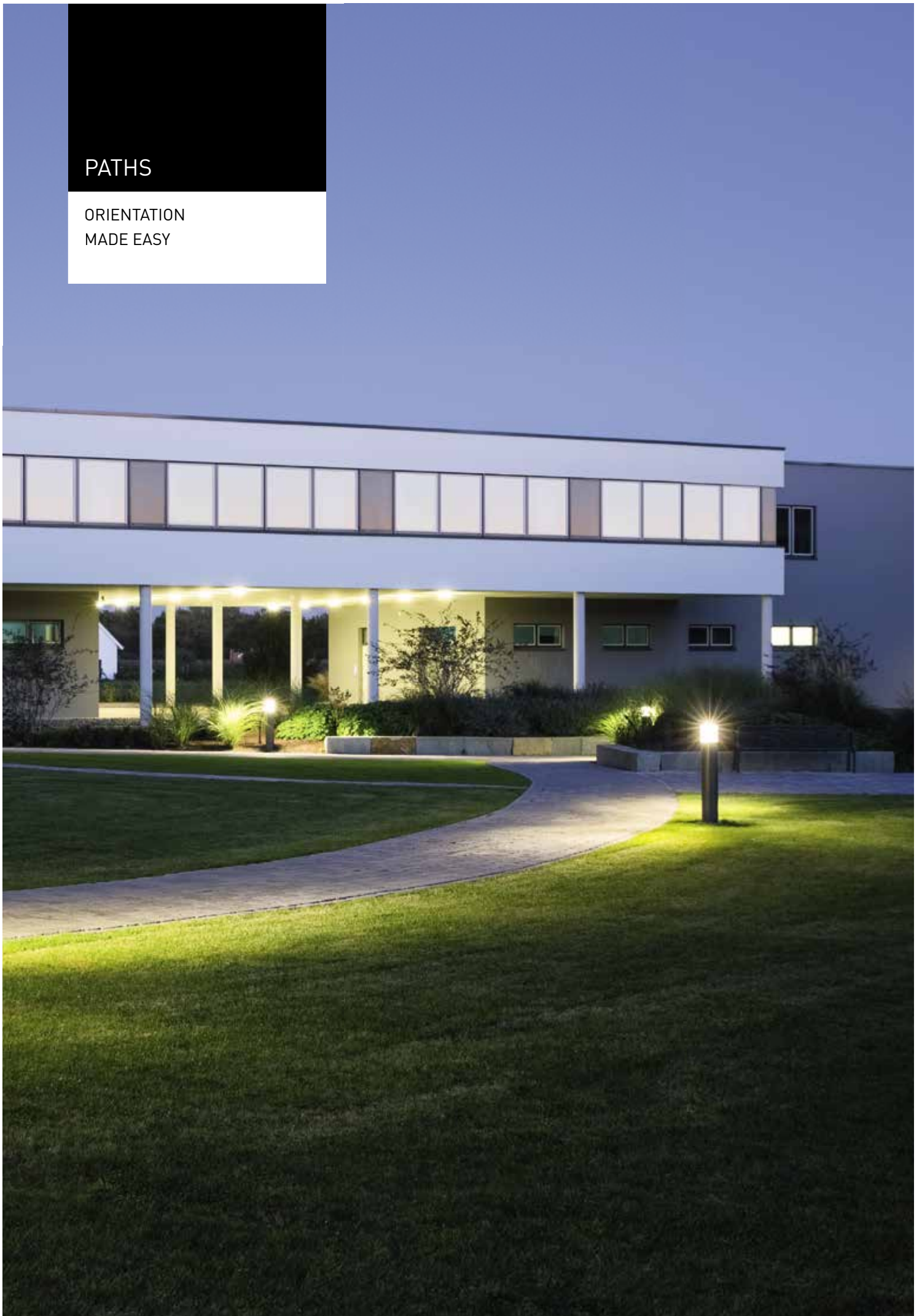
The Viatana combines state-of-the-art LED technology and free-form reflector technology to achieve optimum luminous efficiency and maximum energy efficiency. Various luminaire luminous flux levels between 2,000 and 9,000 lumens ensure ideal illumination.

[www.trilux.com/viatana](http://www.trilux.com/viatana)



# PATHS

ORIENTATION  
MADE EASY





#### **Skeo Q LED bollard**

The concise, linear design of the Skeo Q LED bollard luminaire makes it the optimum lighting solution for outdoor areas around buildings with sophisticated architecture. Whether for entrance zones or passages, the decorative bollard luminaire sets appealing visual accents during the day and emits best light during the hours of darkness.

[www.trilux.com/skeo-q-b](http://www.trilux.com/skeo-q-b)



#### **8841... LED**

The decorative LED bollard luminaires 8841... LED feature highly simple installation and maintenance, and the modular luminaire design enables upgrading to more efficient LED generations.

[www.trilux.com/8841](http://www.trilux.com/8841)



#### **8851... LED**

The 8851... LED is a diverse bollard with an attractive design that sets accents and provides safety and orientation along paths. The timeless design of the bollard blends well into its surroundings to also provide an attractive appearance during the day.

[www.trilux.com/8851](http://www.trilux.com/8851)



#### **HS 80 LED**

The decorative HS bollard luminaires ideally display paths with light accents, and thanks to LED technology are energy-efficient with extremely low maintenance. In this way the highly durable luminaires are ideal and reliable partners in outdoor applications.

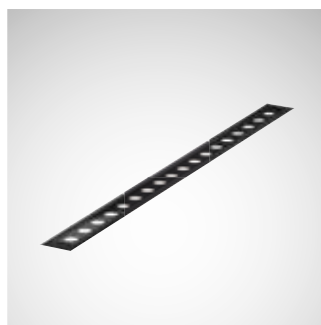
[www.trilux.com/hs](http://www.trilux.com/hs)



#### **8841 LS LED**

8841 LS LED always ensures ideal illumination of paths and squares. This is made possible thanks to MLT<sup>IQ</sup> technology, enabling the beam characteristics of the computer-optimised lenses to be set. Thanks to its elegant design the light column also looks good during the day.

[www.trilux.com/8841ls-led](http://www.trilux.com/8841ls-led)



#### **Altigo G2 LED**

Altigo G2 with its flexible configurations and range of versions is suitable for the reliable lighting of paths and accenting of facades. The flat light line ideally blends both visually and physically into the overall surroundings and has a long service life.

[www.trilux.com/altigo-led](http://www.trilux.com/altigo-led)



#### **ConStela LED**

Supporting columns with various heights, various luminaire heads and the option of using flexibly settable spots create unique light columns with the ConStela LED. The ConStela Configurator also enables individual modules to be quickly combined.

[www.trilux.com/constela](http://www.trilux.com/constela)

# FACADES

PRESTIGIOUS  
EXTERIORS







#### **Skeo Circ LED**

Round, robust and prestigious: Skeo Circ LED provides perfect visual conditions and attractively displayed facades and entrance areas around office buildings. The luminaire is available in two construction sizes, and with various covers offers wide design flexibility.

[www.trilux.com/skeo-circ-led](http://www.trilux.com/skeo-circ-led)



#### **Skeo Pura LED**

With its flat design and two construction sizes, Skeo Pura LED is ideal for both indoor and outdoor entrance areas. The uniformly illuminated cover generates pleasant, atmospheric light effects. And no visible screws disturb the premium quality appearance.

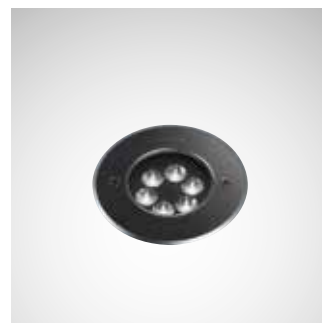
[www.trilux.com/skeo-pura-led](http://www.trilux.com/skeo-pura-led)



#### **Skeo Q spotlight LED**

The decorative Skeo Q LED product family is the ideal choice for accenting outdoor lighting with office buildings. Facades, entrance zones and stairways are attractively illuminated with the highly efficient and resistant wall and ceiling luminaires, bollard luminaires and projectors.

[www.trilux.com/skeo-q-s](http://www.trilux.com/skeo-q-s)



#### **Lutera 90/100/200 LED**

The low recess depth of the Lutera 90/100/200 LED ground-recessed spotlight enables both indoor and outdoor use. Differing beam angles and light colours ideally illuminate both objects and buildings, and the intelligent sealing concept guarantees long-term, disruption-free operation even in extremely adverse conditions.

[www.trilux.com/lutera90](http://www.trilux.com/lutera90)  
[www.trilux.com/lutera100](http://www.trilux.com/lutera100)  
[www.trilux.com/lutera200](http://www.trilux.com/lutera200)



#### **Skeo Q LED/Skeo R LED**

Whether square or rectangular, Skeo Q LED and Skeo R LED surface-mounted wall and ceiling luminaires skilfully showcase entrance areas. The luminaires have a range of variants to enable them to flexibly adapt to specific lighting requirements, and thanks to their minimalist design they also blend harmoniously into the general architecture.

[www.trilux.com/skeo-r-led](http://www.trilux.com/skeo-r-led)  
[www.trilux.com/skeo-q-led](http://www.trilux.com/skeo-q-led)



#### **Altigo G2 LED**

Altigo G2 with its flexible configurations and range of versions is suitable for the reliable lighting of paths and accenting of facades. The flat light line ideally blends both visually and physically into the overall surroundings and has a long service life.

[www.trilux.com/altigo-led](http://www.trilux.com/altigo-led)



#### **Pareda LED/Pareda Slim LED**

With their classic design, Pareda LED and Pareda Slim LED recessed wall luminaires not only attractively showcase entrance areas and steps, but also function as a luminous element within the general architecture. With a recess depth of just 72 mm, the Pareda Slim LED is ideal for areas needing installation flush with the wall.

[www.trilux.com/pareda](http://www.trilux.com/pareda)  
[www.trilux.com/pareda-slim-led](http://www.trilux.com/pareda-slim-led)



#### **Faciella LED**

Available in three construction sizes, the high performance, energy-efficient Faciella LED spot illuminates objects and buildings of various types and sizes in a uniform design. Various luminous flux levels and beam angles provide suitability for a variety of lighting tasks, enabling custom-designed light.

[www.trilux.com/faciella-led](http://www.trilux.com/faciella-led)

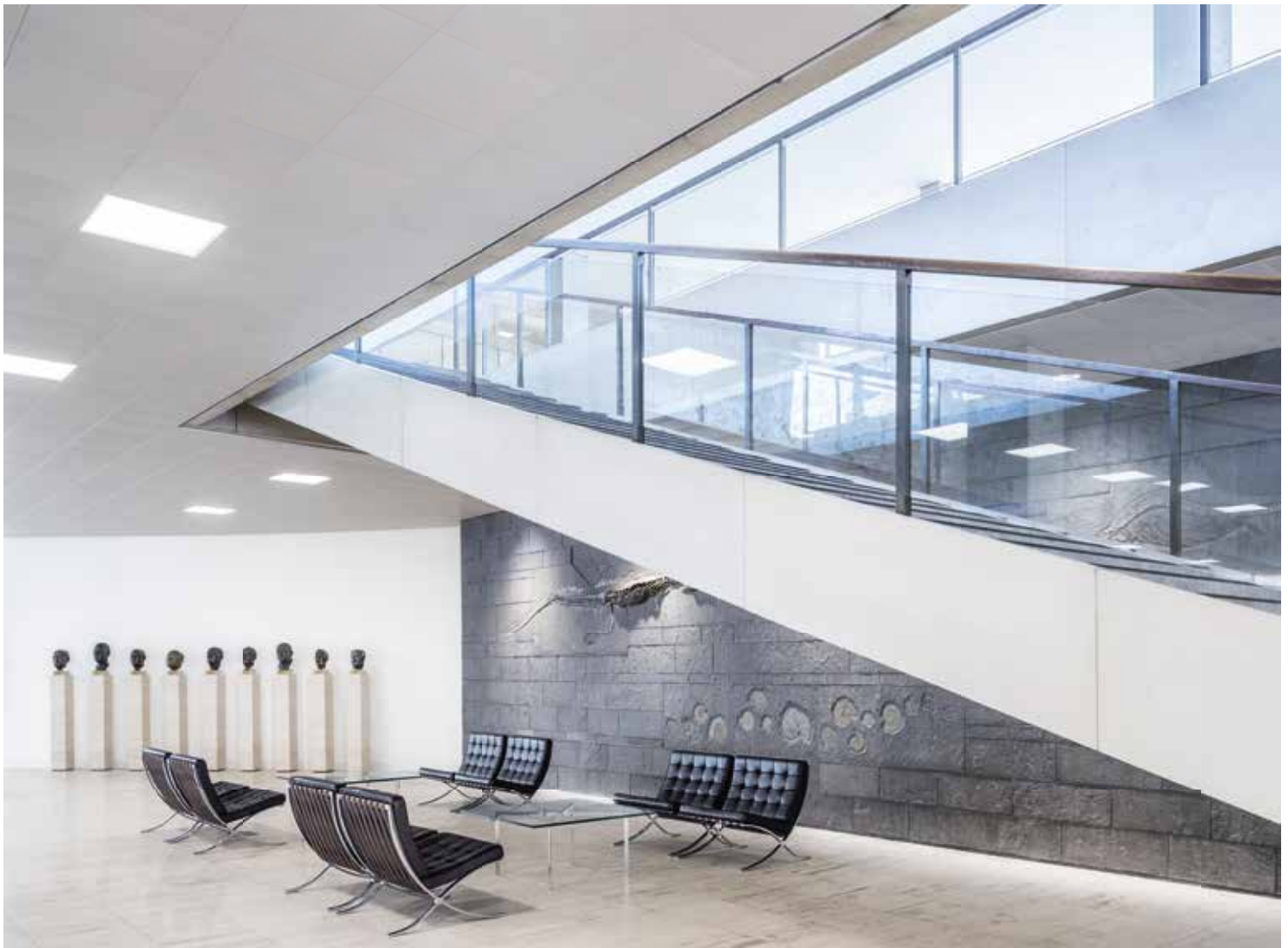
## OUTDOOR AND INDOOR ENTRANCE AREAS

GREET AND  
WELCOME



becker marine systems





### **Showcasing entrance areas for a warm welcome**

There are various reasons for illuminating entrance areas leading to a company building. An attractively illuminated entrance zone not only points the way for visitors and employees, but also provides improved orientation and illuminates possible tripping hazards such as stairs, thereby increasing safety. With the right lighting, any entrance is transformed into a real eye-catcher and creates an inviting atmosphere.

### **An attractive reception for business partners, guests and employees**

In many cases the entrance area is the first point of personal contact with a company, and its importance in terms of prestige is correspondingly high. The right light and suitable luminaires are decisive factors in achieving a harmonious overall impression. Entrance areas require high and simultaneously uniform lighting that facilitates orientation for visitors and employees without glare. Current trends favour planar light and systems enabling creative design ideas with colour using RGB colour mixing. TRILUX offers a wide range of lighting solutions with premium lighting effects and designs that provide new levels of flexibility for prestigious industrial architecture.



A photograph of a modern building with a glass facade, featuring multiple stories with large windows. In the foreground, there is a tall, dark, cylindrical outdoor light fixture with a glowing, conical-shaped light source inside. The building is reflected in the glass. To the right, there is a wooden pergola structure. The ground is covered with green grass and some low-lying plants. The sky is a clear blue.

## OUTDOOR ENTRANCE AREAS

THE FIRST IMPRESSION  
COUNTS



#### **Skeo Circ LED**

Round, robust and prestigious: Skeo Circ LED provides perfect visual conditions and attractively displayed facades and entrance areas around office buildings. The luminaire is available in two construction sizes, and with various covers offers wide design flexibility.

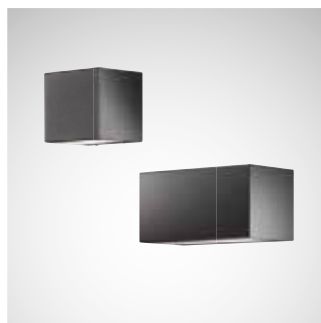
[www.trilux.com/skeo-circ-led](http://www.trilux.com/skeo-circ-led)



#### **Skeo Pura LED**

With its flat design and two construction sizes, Skeo Pura LED is ideal for both indoor and outdoor entrance areas. The uniformly illuminated cover generates pleasant, atmospheric light effects. And no visible screws disturb the premium quality appearance.

[www.trilux.com/skeo-pura-led](http://www.trilux.com/skeo-pura-led)



#### **Skeo Q LED/Skeo R LED**

Whether square or rectangular, Skeo Q LED and Skeo R LED surface-mounted wall and ceiling luminaires skilfully showcase entrance areas. The luminaires have a range of variants to enable them to flexibly adapt to specific lighting requirements, and thanks to their minimalist design they also blend harmoniously into the general architecture.

[www.trilux.com/skeoq](http://www.trilux.com/skeoq)  
[www.trilux.com/skeor](http://www.trilux.com/skeor)



#### **Altigo G2 LED**

Altigo G2 recessed luminaire with its flexible configurations and range of versions is suitable for the reliable lighting of paths and the accenting of facades. The flat light line ideally blends both visually and physically into the overall surroundings and has a long service life.

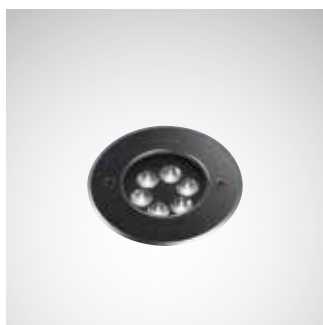
[www.trilux.com/altigo](http://www.trilux.com/altigo)



#### **Lutera C LED**

As a compact, durable and high-efficiency downlight, Lutera C attractively and reliably illuminates path zones around buildings. As a supplement to the Lutera family and thanks to differing versions, it illuminates differing outdoor areas with a uniform design.

[www.trilux.com/lutera-c-led](http://www.trilux.com/lutera-c-led)



#### **Lutera 90/100/200 LED**

The low recess depth of the Lutera 90/100/200 LED ground-recessed spotlight enables both indoor and outdoor use. Differing beam angles and light colours ideally illuminate both objects and buildings, and the intelligent sealing concept guarantees long-term, disruption-free operation even in extremely adverse conditions.

[www.trilux.com/lutera90](http://www.trilux.com/lutera90)  
[www.trilux.com/lutera100](http://www.trilux.com/lutera100)  
[www.trilux.com/lutera200](http://www.trilux.com/lutera200)



#### **Pareda LED/Pareda Slim LED**

With their classic design, Pareda LED and Pareda Slim LED recessed wall luminaires not only attractively showcase entrance areas and steps, but also function as a luminous element within the general architecture. With a recess depth of just 72 mm, the Pareda Slim LED is ideal for areas needing installation flush with the wall.

[www.trilux.com/pareda](http://www.trilux.com/pareda)  
[www.trilux.com/pareda-slim-led](http://www.trilux.com/pareda-slim-led)



#### **8841... LED**

The decorative LED bollard luminaire 8841... LED features highly simple installation and maintenance, and its modular luminaire design enables simple upgrading to more efficient LED generations. The symmetric optic creates a coherent appearance in entrance areas.

[www.trilux.com/8841](http://www.trilux.com/8841)

# INDOOR ENTRANCE AREAS

AN INVITING RECEPTION







#### **Solegra LED**

Ideal for new worlds of work: The flexible Solegra LED range of round luminaires upgrades rooms with its modern design and achieves ideal visual conditions anywhere, ranging from VDU workstations to creative zones. The luminaire is controllable via the LiveLink light management system on request.

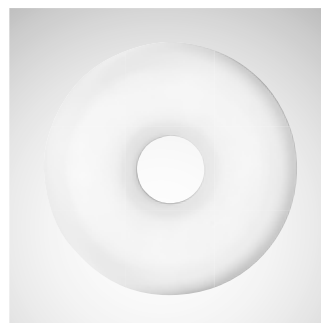
[www.trilux.com/solegra-led](http://www.trilux.com/solegra-led)



#### **74R/Q LED**

The elegant 74R and Q LED feature flat, softly shaped luminaire bodies for implementing both direct and indirect light components. Various sizes and configurations make them the ideal lighting solutions for corridors, stairways and prestigious entrance areas.

<http://www.trilux.com/74rq-led>



#### **Oyamo LED**

Oyamo LED is an unmistakable element of style and simultaneously a functional lighting solution. Its soft shape and uniform light impact make it an eye catcher that displays prestigious rooms perfectly. An Active variant is also available.

[www.trilux.com/oyamo-led](http://www.trilux.com/oyamo-led)



#### **Sonnos LED**

One luminaire range and countless options: Sonnos LED downlights provide high quality general lighting in offices, and thanks to their different designs and mounting options can be ideally integrated into individual office designs.

[www.trilux.com/sonnos-led](http://www.trilux.com/sonnos-led)



#### **Parelia LED**

Offices with modern lighting: Parelia LED is ideal for lighting parallel to the building axis, without reflected glare from the direct component. The continuous line also illuminates challenging floor plans and the lateral light line creates an attractive impression.

[www.trilux.com/parelia-led](http://www.trilux.com/parelia-led)



#### **Inplana/Onplana LED**

Inplana and Onplana LED provide glare-controlled planar light for the first time in the downlight sector. The luminaires blend ideally into all surroundings thanks to their modern, purist design. Also suitable for wall mounting due to minimised direct glare and wide light emission to provide new planning and lighting design options.

[www.trilux.com/inplana-onplana](http://www.trilux.com/inplana-onplana)



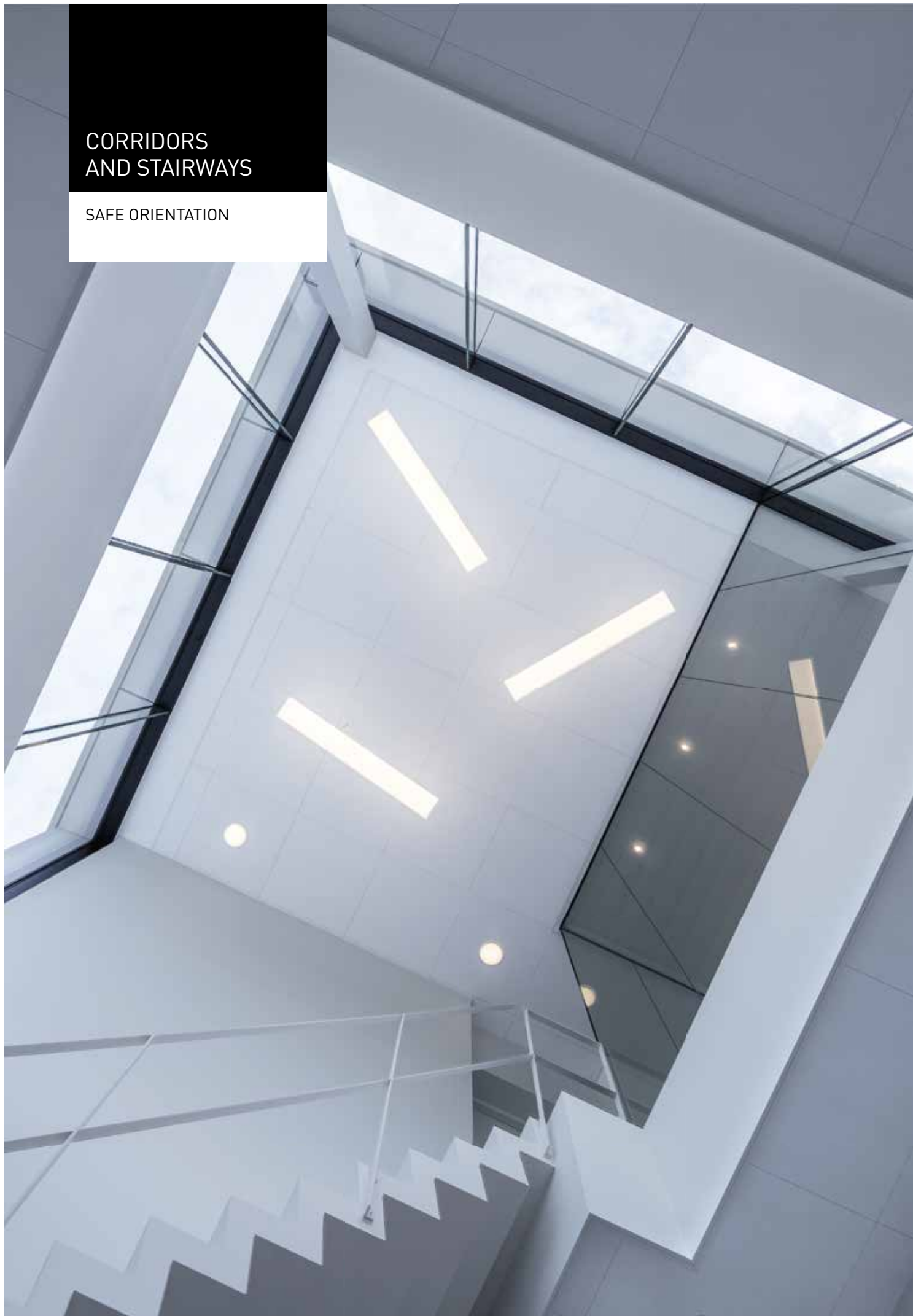
#### **Lateralo Ring LED**

Maximum functionality paired with a prestigious design – the Lateralo Ring LED. The interplay of direct and indirect light components provides maximum visual comfort and illuminates rooms brightly, softly and without shadows. The timeless design means it is also an eye-catcher in switched off state.

[www.trilux.com/lateralo-ring-led](http://www.trilux.com/lateralo-ring-led)

# CORRIDORS AND STAIRWAYS

SAFE ORIENTATION





### **Functionality and good looks for stairways and corridors**

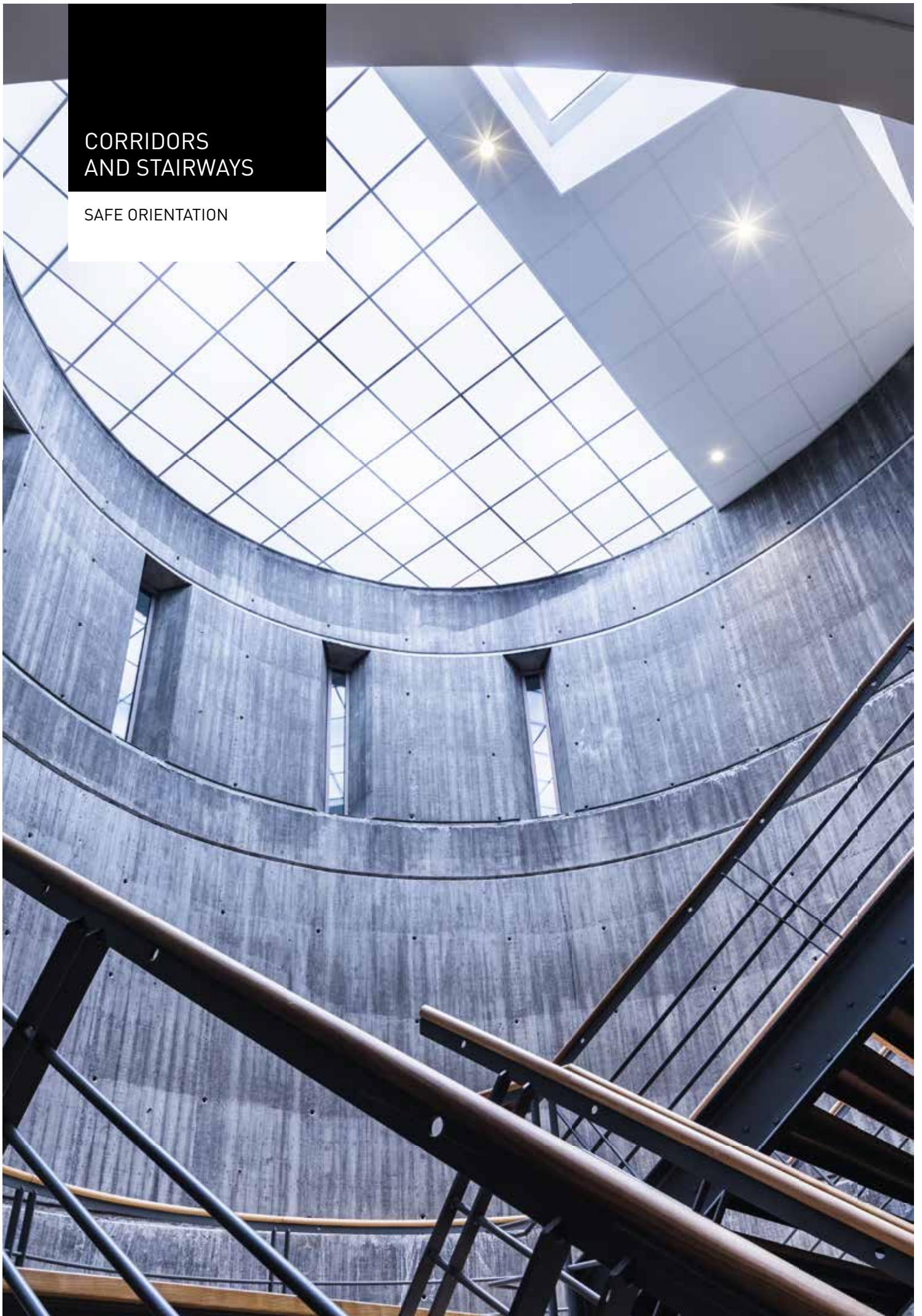
When lighting corridors and stairways, functional aspects are often focused on – areas must be ideally illuminated to provide good orientation and enable safe movement. TRILUX luminaires provide even more: with their timelessly modern designs and attractive light, even long corridors and angled stairways can be effectively showcased.

A practical option: in areas with low traffic frequency, energy consumption can be reduced without impairing safety by using a light management system with presence detection.



## CORRIDORS AND STAIRWAYS

SAFE ORIENTATION

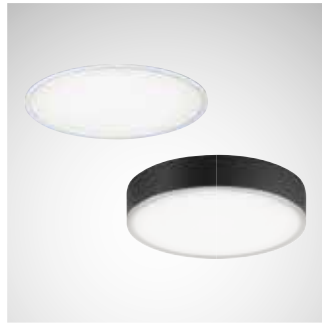




#### **Polaron IQ LED**

The basis element of the Polaron IQ LED range is a filigree, round light profile providing maximum planning flexibility and enabling countless combinations within the series – this enables lighting and luminaire design to be perfectly adapted to specific applications. RGB versions further expand the design flexibility.

[www.trilux.com/polaroniq](http://www.trilux.com/polaroniq)



#### **Inplana/Onplana LED**

Inplana and Onplana LED provide glare-controlled planar light for the first time in the downlight sector. The luminaires blend ideally into all surroundings thanks to their modern, purist design. Also suitable for wall mounting due to minimised direct glare and wide light emission to provide new planning and lighting design options.

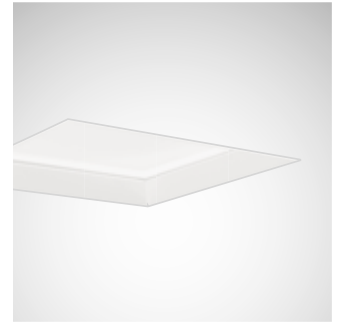
[www.trilux.com/inplana-onplana](http://www.trilux.com/inplana-onplana)



#### **Sonnos LED**

One luminaire range and countless options: Sonnos LED downlights provide high quality general lighting in offices, and thanks to their different designs and mounting options can be ideally integrated into individual office designs.

[www.trilux.com/sonnos-led](http://www.trilux.com/sonnos-led)



#### **Arimo Slim Sky LED**

The design of the new Arimo Slim CDP LED SKY was conceived with an emphasis on classic, square lay-in ceilings. With its three-dimensional quality the luminaire gives the impression of a recessed rooflight – this helps to break open the often rigid spatial effect of grid ceilings. The result is optimum lighting conditions and an office atmosphere with a genuine wow-effect.

[www.trilux.com/arimo-slim-sky](http://www.trilux.com/arimo-slim-sky)



#### **74RS LED**

Prestigious and functional light for applications ranging from stairways to creative zones and executive offices: the HCL-capable wall and ceiling luminaires in the 74 range upgrade any room with their outstanding quality of light and classically qualitative designs – ideal for new worlds of work in offices for example.

[www.trilux.com/74rs-led](http://www.trilux.com/74rs-led)



#### **74R/Q LED**

The elegant 74R and Q LED feature flat, softly shaped luminaire bodies for implementing both direct and indirect light components. Various sizes and configurations make them the ideal lighting solutions for corridors, stairways and prestigious entrance areas.

[www.trilux.com/74rq-led](http://www.trilux.com/74rq-led)



#### **LC67 LED**

The LC67 light channel system ideally presents architecture and features especially homogeneous light without directly visible shadow gaps or differences in luminance. Available as standard in 10 different module lengths, the light channel can be installed horizontally and vertically around corners with T, L and X connectors, and is ideal for corridors and stairways.

[www.trilux.com/lc67-led](http://www.trilux.com/lc67-led)



#### **Solván Flow LED**

Whether recessed, surface-mounted or suspended: Solván Flow LED not only blends into any surroundings thanks to its flat design but is also enormously flexible. Selectable lumen packages, optical systems and beam characteristics provide a highly diverse lighting solution.

[www.trilux.com/solvánflow](http://www.trilux.com/solvánflow)



EFFECTIVELY  
PRESENTED





### Individual light control for exhibition areas

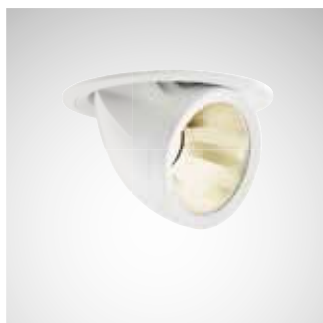
Light is able to provide a variety of benefits – it can illuminate rooms brightly, set strong contrasts, guide, support your brand presence, stimulate or calm down, showcase and be efficient at the same time.

When planning a lighting concept each luminaire is assigned a definite lighting task. For instance, this could be the illumination of the products, exhibits or the architecture itself. Our flexible lighting concepts enable ideal adaptation to changing exponents in exhibitions by specifically and ideally aligning the luminaires. The colour temperature and illuminance can be modified to suit any purpose. Supplementary accents can be set using flexible recessed spotlights with adjustable inclination angles.

## EXHIBITION AREAS

EFFECTIVELY  
PRESENTED





#### **Quira LED**

Quira LED provides efficient and high quality lighting solutions for all illumination tasks. Whether showcasing single products, groups of merchandise or structures – Quira LED can be used as a spotlight or pivotable downlight and bathes all in optimum light.

[www.oktalite.com/quira](http://www.oktalite.com/quira)  
[www.oktalite.com/quira-plus](http://www.oktalite.com/quira-plus)



#### **Sonnos LED**

One luminaire range and countless options: Sonnos LED downlights provide high quality general lighting in offices, and thanks to their different designs and mounting options can be ideally integrated into individual office designs.

[www.trilux.com/sonnos-led](http://www.trilux.com/sonnos-led)



#### **Solegra LED**

Ideal for new worlds of work: The flexible Solegra LED range of round luminaires upgrades rooms with its modern design and achieves ideal visual conditions anywhere, ranging from VDU workstations to creative zones. The luminaire is controllable via the LiveLink light management system on request.

[www.trilux.com/solegra-led](http://www.trilux.com/solegra-led)



#### **Canilo Plus LED surface-mounted directional spotlight**

With up to 6,000 lumens the power package in the Canilo luminaire range can be used everywhere where high light output is required – e.g. in rooms with high ceilings or where strong accents and a dramatic interplay of light and shadow are desired.

[www.oktalite.com/en/canilo-plus](http://www.oktalite.com/en/canilo-plus)



#### **Canilo Plus LED pendant luminaire**

With up to 6,000 lumens, the Canilo Plus LED pendant luminaire is the ideal choice for rooms with high ceilings and areas benefiting from strong accents and a dramatic interplay of light and shadow. The suspension height can be modified without tools for simple installation.

[www.oktalite.com/en/canilo-plus](http://www.oktalite.com/en/canilo-plus)



#### **Limba LED**

With its timeless vintage look, individual style options and modern lighting technology, Limba LED creates unique and intelligently designed ambiances. A wide selection of LED elements and an opal acrylic ring for perfect glare control achieve ideal illumination with a personal touch.

[www.oktalite.com/limba](http://www.oktalite.com/limba)



#### **In.Vola LED**

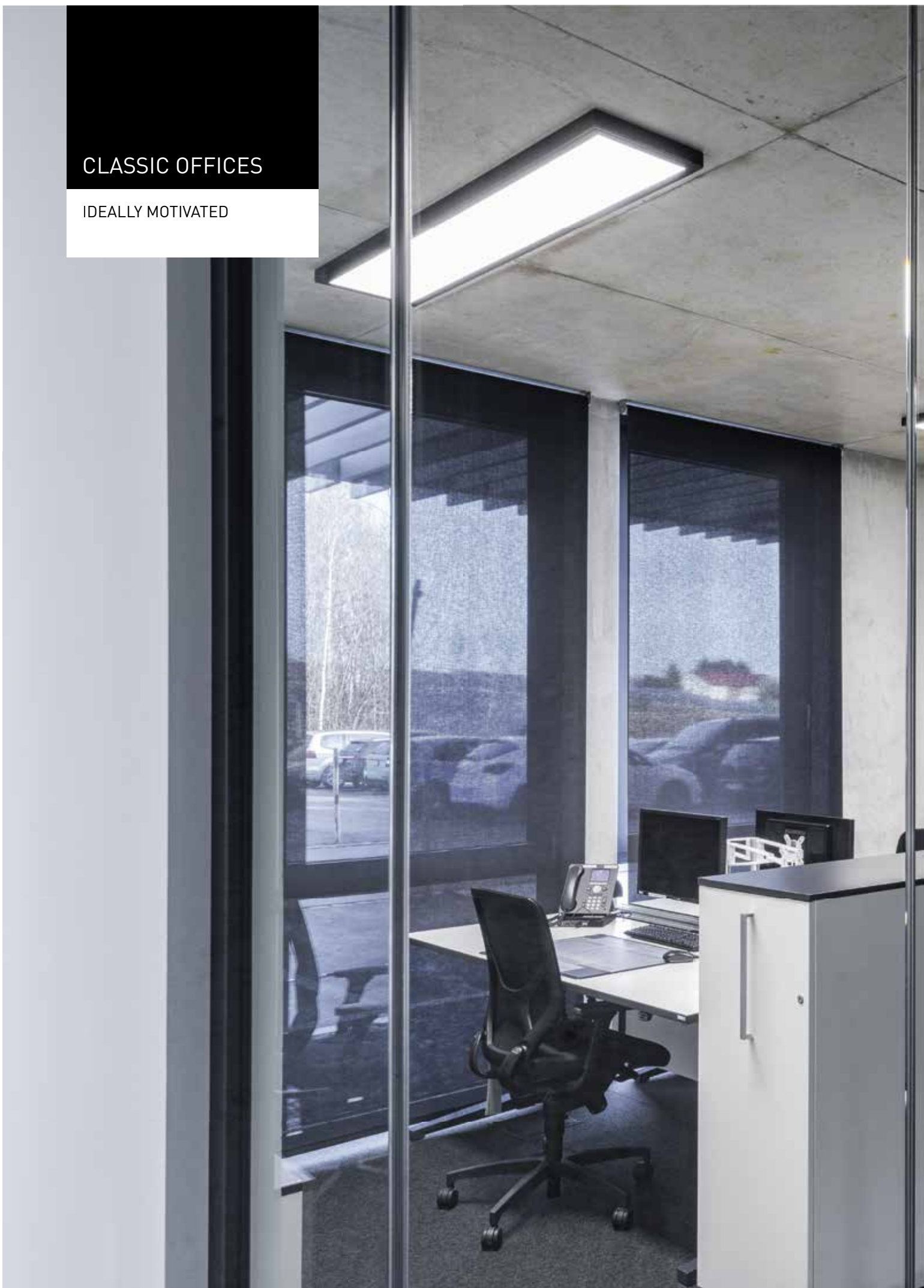
In.Vola LED suspended luminaires with translucent, coloured shade attract the attention of employees and visitors and simultaneously represent the company with attractive and easily customisable design. The shade is available in two shapes and can be adapted on request to the corporate CD.

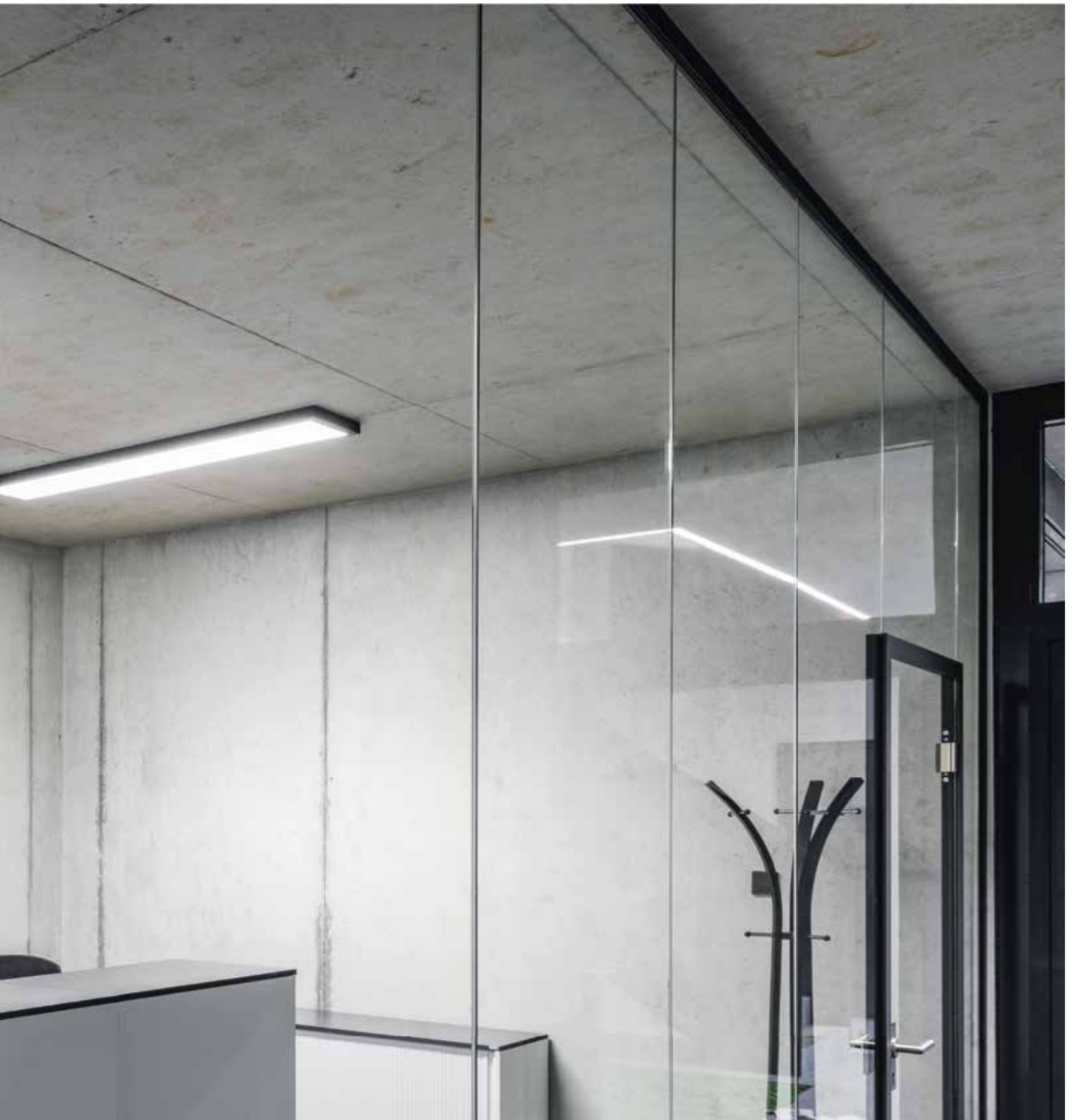
[www.oktalite.com/invola](http://www.oktalite.com/invola)



## CLASSIC OFFICES

IDEALLY MOTIVATED





### **Light as a motivation factor**

Several personal adjustments are available for well-being in offices. Light in such cases adopts a central role. The standard-compliant, glare-free illumination of rooms and individual task areas supports concentrated, fatigue-free work over long periods. Technologies such as Human Centric Lighting also help to stabilise the biological rhythm. Together, these factors improve the motivation of employees, enabling them to achieve higher performance levels.

## CLASSIC OFFICES

IDEALLY MOTIVATED



### Open-plan office

Open-plan offices must meet complex requirements ranging from individual needs to the general feeling of the room. This begins with the floor plan and culminates in optimised lighting design that guarantees standard-compliant, glare-free lighting at every desk and at the same time positively impacts the general atmosphere. A broad and ideally matched product portfolio offers complete flexibility.

### Single office/twin office

A well thought-out design of the office forms the basis for pleasant everyday tasks as well as concentrated work. A central aspect in such cases are the lighting conditions which need to respond flexibly to changing needs such as computer screen work, creative briefings and reading documents. Maximum quality of light and pioneering technologies such as Human Centric Lighting ensure increased well-being at the touch of a button.





### **Meeting room**

In classic office environments, the meeting room is the multifunctional centre covering creative meetings, multimedia presentations and important customer appointments. These differing aesthetic and functional requirements call for individual light concepts and flexibility concerning light colour, intensity and accentuation. A digital light management system such as LiveLink allows you a comprehensive control of these aspects.

## CLASSIC OFFICES

IDEALLY MOTIVATED





#### **Parella LED**

Offices with modern lighting: Parelia LED is ideal for lighting parallel to the building axis, without reflected glare from the direct component. The continuous line also illuminates challenging floor plans and the lateral light line creates an attractive impression.

[www.trilux.com/parelia-led](http://www.trilux.com/parelia-led)



#### **Luceo Slim LED**

Whether as a continuous line, individual luminaire, suspended or surface-mounted version: Luceo Slim LED with its wide, uniformly illuminated light emission surface creates outstanding, glare-free planar light in offices – and also upgrades the atmosphere with its timelessly attractive design.

[www.trilux.com/luceo-slim-led](http://www.trilux.com/luceo-slim-led)



#### **Arimo Slim Sky LED**

The design of the new Arimo Slim CDP LED SKY was conceived with an emphasis on classic, square lay-in ceilings. With its three-dimensional quality the luminaire gives the impression of a recessed rooflight – this helps to break open the often rigid spatial effect of grid ceilings. The result is optimum lighting conditions and an office atmosphere with a genuine wow-effect.

[www.trilux.com/arimo-slim-sky](http://www.trilux.com/arimo-slim-sky)



#### **Arimo Slim MRX LED, Arimo Slim CDP and CDP-X LED**

With the Arimo Slim LED range of luminaires, all office zones can be illuminated in a uniform design language. The attractive luminaire design also upgrades the atmosphere in the room. Many different features support the work of future-oriented digital workplaces already today.

[www.trilux.com/arimosmrx](http://www.trilux.com/arimosmrx)  
[www.trilux.com/arimoscdpx](http://www.trilux.com/arimoscdpx)



#### **Sonnos LED**

One luminaire range and countless options: Sonnos LED downlights provide high quality general lighting in offices, and thanks to their different designs and mounting options can be ideally integrated into individual office designs.

[www.trilux.com/sonnos-led](http://www.trilux.com/sonnos-led)



#### **Bicult LED**

One desktop luminaire for any application: the glare-free indirect light component of Bicult LED generates pleasant general lighting, and standard-compliant illumination of the workstation with the direct component. The light can be individually set by the user via an app or push-button.

[www.trilux.com/bicult-led](http://www.trilux.com/bicult-led)



#### **Lunexo H LED**

The exclusive suspended luminaire with visible light edge emits pleasantly glare-free light compliant to UGR19 and sets standards with respect to comfort and a great appearance. The light colour and intensity of both the direct and indirect light component can be flexibly set and a light management system can be integrated.

[www.trilux.com/lunexo](http://www.trilux.com/lunexo)



#### **Belviso C1 LED**

With completely uniform illumination, the Belviso C1 LED recessed luminaire creates high levels of well-being with its shadow-free light and provides lighting for computer screen workstations in accordance with standards. Active variants with white-white control emit relaxing or activating light according to needs.

[www.trilux.com/belvisoc1](http://www.trilux.com/belvisoc1)



## NEW WORK

DYNAMIC LIGHT  
CONCEPTS FOR  
DYNAMIC WORK





New Work promises companies and employees numerous new areas of freedom. In return, new work environments demand a high degree of flexibility and adaptability – not only from employees, but also from infrastructures such as lighting that until now were much less dynamic. Modern lighting solutions make a significant contribution to the success of New Work concepts. They permit flexible use of space and can be tailored to the needs of the user and the specific work situation. In addition to the obvious advantages for users, employers also benefit: companies that consistently focus on the well-being of their employees – for example by designing lighting according to the needs of their employees – can present themselves as modern and attractive employers. A positive reputation is an important building block in employer branding and strengthens the position of companies in the competition for increasingly scarce specialist staff.

The classic occasion for introducing New Work elements is a move to new premises, but is also fundamental when introducing technical upgrades such as lighting refurbishments. An efficient and user-friendly lighting solution is a central infrastructure module for current and future approaches to the topic of New Work. Whether a new construction or refurbishment, TRILUX offers ideal consultation, optimum orientation integration and perfect lighting for the complete range of requirements. This is what we call SIMPLIFY YOUR LIGHT.

OPEN SPACES

THE FUTURE IS NOW





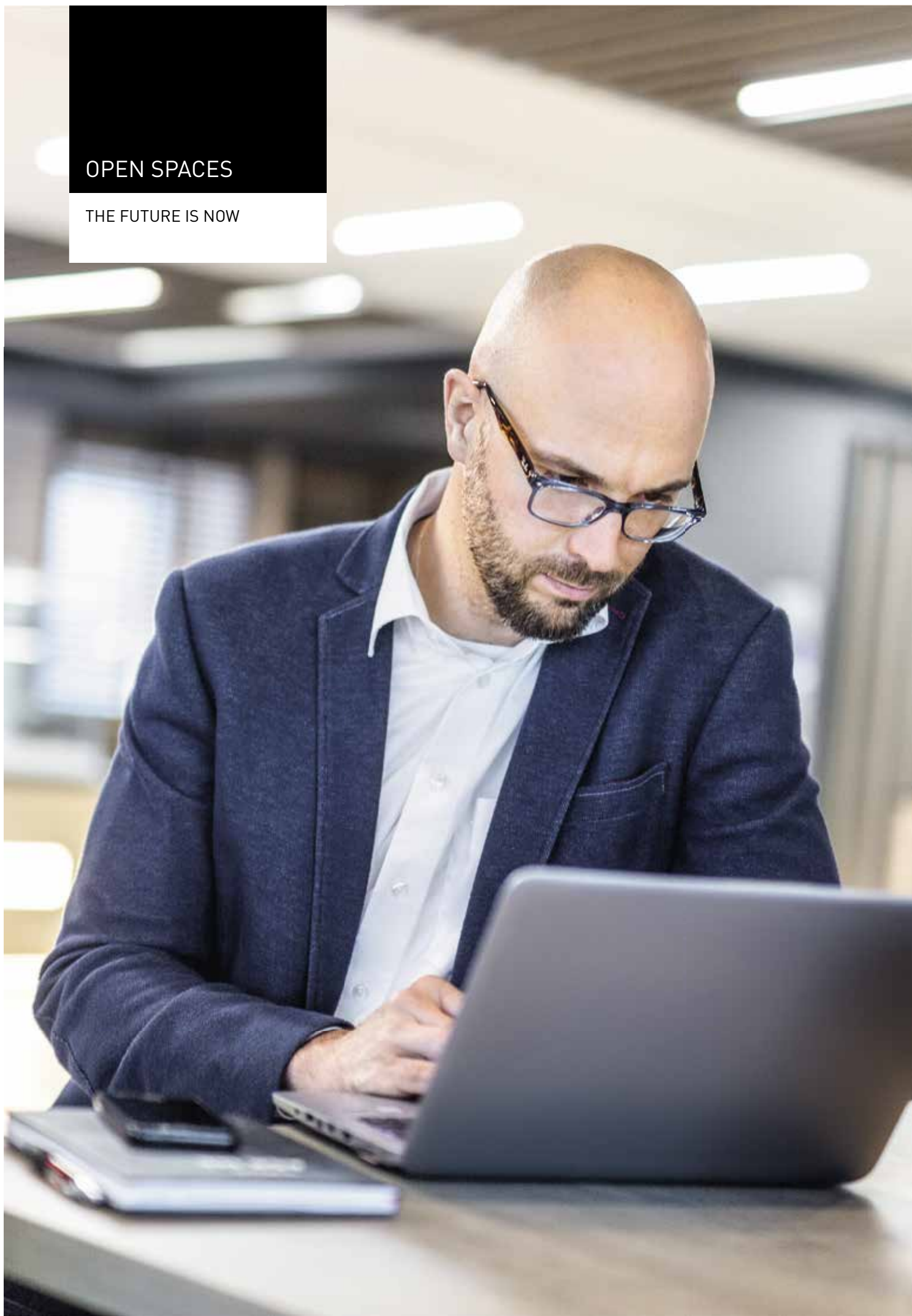


### **For the innovations of tomorrow**

The workplace of the future has already arrived in everyday office situations. The classic open-plan office is increasingly being replaced by an open space composed of highly different zones: individual workstations, telephone cabins and discussion islands enable highly flexible use. Desk sharing and clean desk are also part of open space offices, as are beanbags and standing workstations. Demands in terms of light quality are accordingly high. The various zones in the open space require individual and flexibly adaptable lighting (Human Centric Lighting). Targeted light management also increases energy efficiency.

OPEN SPACES

THE FUTURE IS NOW





#### **Bicult LED**

One desktop luminaire for any application: the glare-free indirect light component of Bicult LED generates pleasant general lighting, and standard-compliant illumination of the workstation with the direct component. The light can be individually set by the user via an app or push-button.

[www.trilux.com/bicult-led](http://www.trilux.com/bicult-led)



#### **Sonnos LED**

One luminaire range and countless options: Sonnos LED downlights provide high quality general lighting in offices, and thanks to their different designs and mounting options can be ideally integrated into individual office designs.

[www.trilux.com/sonnos-led](http://www.trilux.com/sonnos-led)



#### **Parelia LED**

Offices with modern lighting: Parelia LED is ideal for lighting parallel to the building axis, without reflected glare from the direct component. The continuous line also illuminates challenging floor plans and the lateral light line creates an attractive impression.

[www.trilux.com/parelia-led](http://www.trilux.com/parelia-led)



#### **So-Tube LED**

The tube-shaped So-Tube LED combines robust industrial charm with a filigree design. Thus restored industrial halls, rustic office complexes and creative open spaces benefit from modern lighting without needing to make compromises in terms of atmosphere and design.

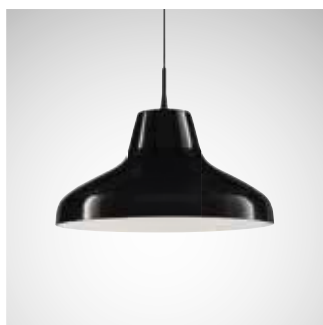
[www.trilux.com/so-tube-led](http://www.trilux.com/so-tube-led)



#### **Arimo Slim Sky LED**

The design of the new Arimo Slim CDP LED SKY was conceived with an emphasis on classic, square lay-in ceilings. With its three-dimensional quality the luminaire gives the impression of a recessed rooflight – this helps to break open the often rigid spatial effect of grid ceilings. The result is optimum lighting conditions and an office atmosphere with a genuine wow-effect.

[www.trilux.com/arimo-slim-sky](http://www.trilux.com/arimo-slim-sky)



#### **Limba LED**

With its timeless vintage look, individual style options and modern lighting technology, Limba LED creates unique and intelligently designed ambiances. A wide selection of LED elements and an opal acrylic ring for perfect glare control achieve ideal illumination with a personal touch.

[www.oktalite.com/limba](http://www.oktalite.com/limba)



#### **Solegra LED**

Ideal for new worlds of work: The flexible Solegra LED range of round luminaires upgrades rooms with its modern design and achieves ideal visual conditions anywhere, ranging from VDU workstations to creative zones. The luminaire is controllable via the LiveLink light management system on request.

[www.trilux.com/solegra-led](http://www.trilux.com/solegra-led)



#### **E-Line B19 LED**

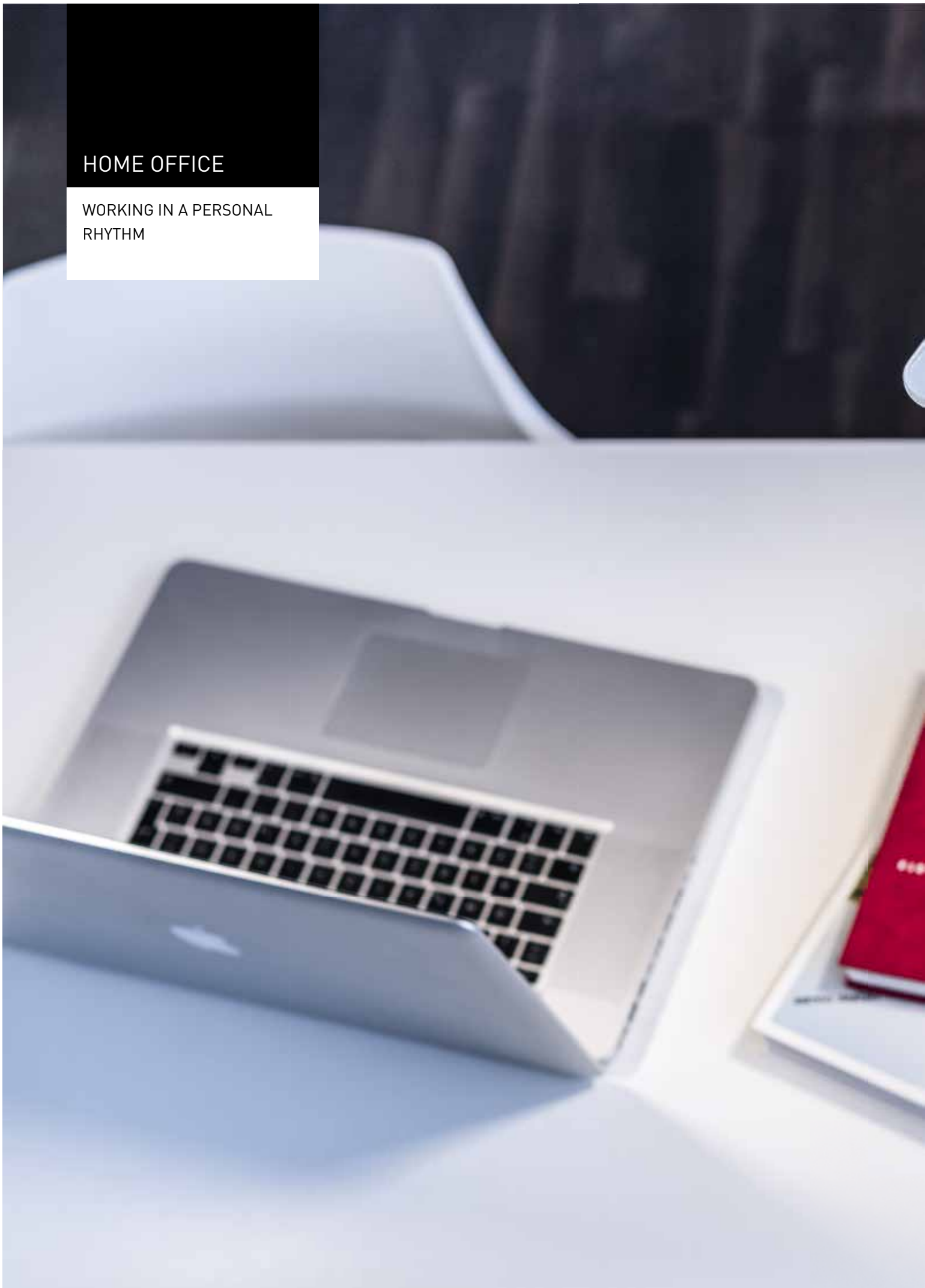
E-Line has represented maximum energy efficiency and product quality for more than 25 years. Equipped with the glare-controlled UGR<19 optic, the E-Line B19 LED version of the continuous line is also suitable for the standard-compliant illumination of computer screen workstations.

[www.trilux.com/eline-led](http://www.trilux.com/eline-led)



## HOME OFFICE

WORKING IN A PERSONAL  
RHYTHM





### **Work and life, ideally balanced**

Working from home is not only a part of everyday activities for many freelancers and creative people, but is also achieving increased acceptance with employers. Digitalisation enables the place of work to be freely chosen, and employees are appreciating this. Greater flexibility, a more uniform work-life balance and concentrated work in familiar surroundings make working from home increasingly appealing. When equipping the home office, selecting the lighting is also important in addition to components such as furniture, laptop or screen. In such cases innovative lighting concepts increase efficiency, well-being and fun while working, whilst modern design brings an element of style to private work spaces.

## HOME OFFICE

WORKING IN A PERSONAL  
RHYTHM





**Bicult LED**

One desktop luminaire for any application: the glare-free indirect light component of Bicult LED generates pleasant general lighting, and standard-compliant illumination of the workstation with the direct component. The light can be individually set by the user via an app or push-button.

[www.trilux.com/bicult-led](http://www.trilux.com/bicult-led)

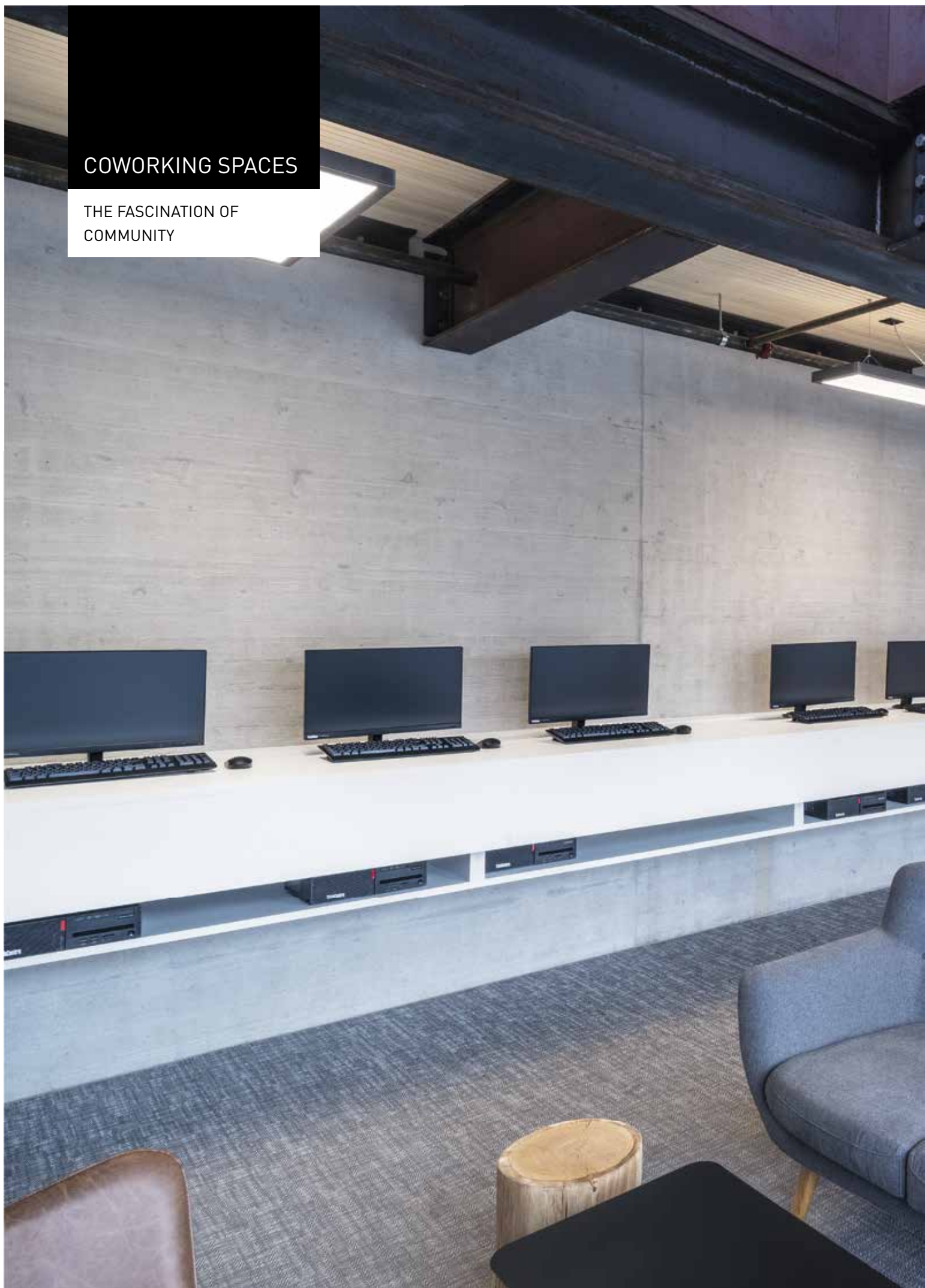
**Sonnos LED**

One luminaire range and countless options: Sonnos LED downlights provide high quality general lighting in offices, and thanks to their different designs and mounting options can be ideally integrated into individual office designs.

[www.trilux.com/sonnos-led](http://www.trilux.com/sonnos-led)

## COWORKING SPACES

THE FASCINATION OF  
COMMUNITY





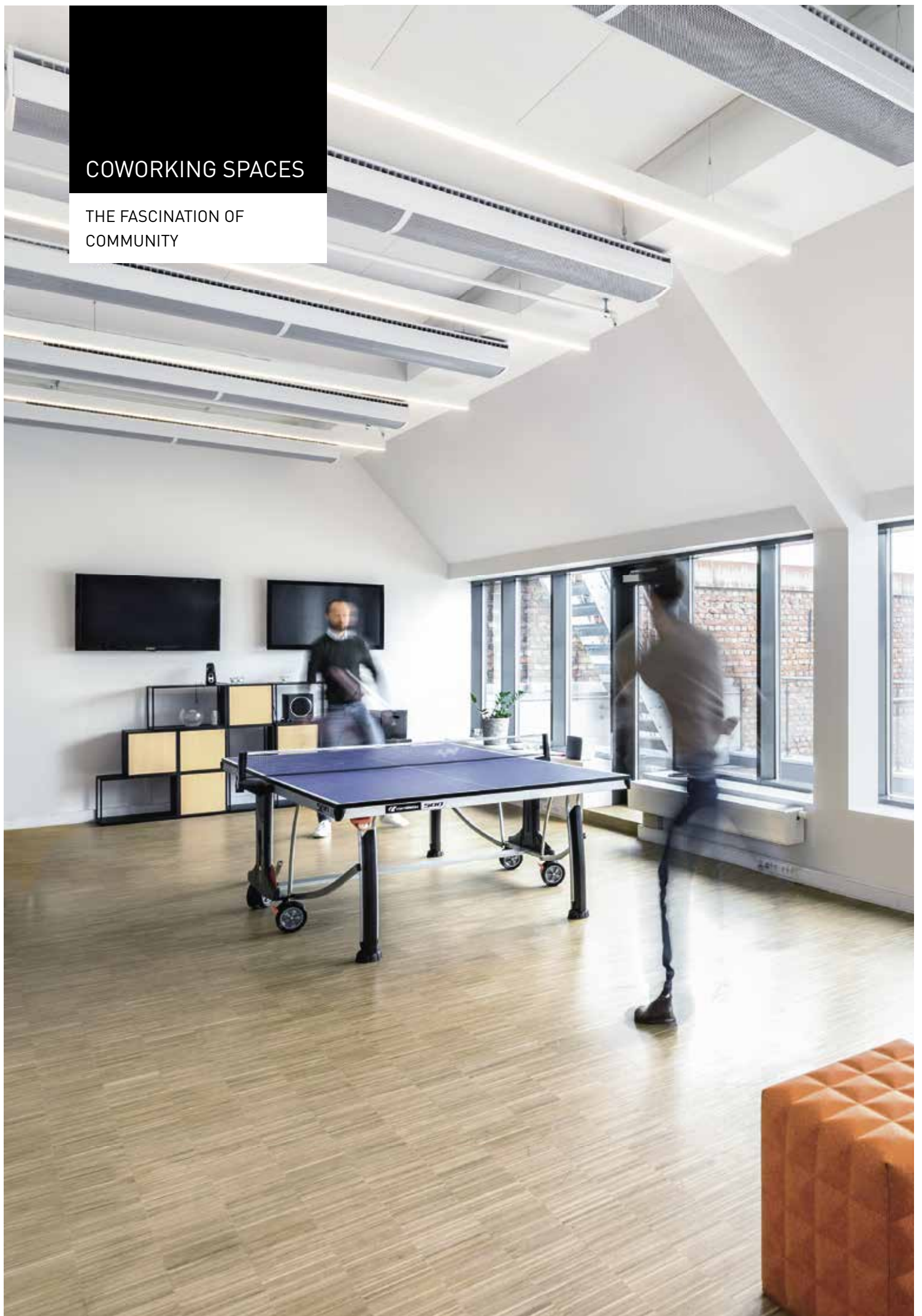
### **Creativity and networking ideally illuminated**

A community of business professionals from highly different industries, working in the same room: whether individually or in a team, coworking has established itself especially for freelancers and has become a fixed part of large towns and cities. The focus in this respect is placed on openness, collaboration and maximum flexibility. Coworking spaces also offer room for highly diverse events, seminars and workshops. Coworking offices are able to positively distinguish themselves from the competition with healthy, standard-compliant lighting. The quality of light (Human Centric Lighting) improves well-being and creativity, and also supports information exchange and networking between the users. LED technology and specific light management achieve high energy savings and sustainability.



## COWORKING SPACES

THE FASCINATION OF  
COMMUNITY





#### **Bicult LED**

One desktop luminaire for any application: the glare-free indirect light component of Bicult LED generates pleasant general lighting, and standard-compliant illumination of the workstation with the direct component. The light can be individually set by the user via an app or push-button.

[www.trilux.com/bicult-led](http://www.trilux.com/bicult-led)



#### **Sonnos LED**

One luminaire range and countless options: Sonnos LED downlights provide high quality general lighting in offices, and thanks to their different designs and mounting options can be ideally integrated into individual office designs.

[www.trilux.com/sonnos-led](http://www.trilux.com/sonnos-led)



#### **Solegra LED**

Ideal for new worlds of work: The flexible Solegra LED range of round luminaires upgrades rooms with its modern design and achieves ideal visual conditions anywhere, ranging from VDU workstations to creative zones. The luminaire is controllable via the LiveLink light management system on request.

[www.trilux.com/solegra-led](http://www.trilux.com/solegra-led)



#### **So-Tube LED**

The tube-shaped So-Tube LED combines robust industrial charm with a filigree design. Thus restored industrial halls, rustic office complexes and creative open spaces benefit from modern lighting without needing to make compromises in terms of atmosphere and design.

[www.trilux.com/so-tube-led](http://www.trilux.com/so-tube-led)



#### **Inplana/Onplana LED**

Inplana and Onplana LED provide glare-controlled planar light for the first time in the downlight sector. The luminaires blend ideally into all surroundings thanks to their modern, purist design. Also suitable for wall mounting due to minimised direct glare and wide light emission to provide new planning and lighting design options.

[www.trilux.com/inplana-onplana](http://www.trilux.com/inplana-onplana)



#### **Limba LED**

With its timeless vintage look, individual style options and modern lighting technology, Limba LED creates unique and intelligently designed ambiances. A wide selection of LED elements and an opal acrylic ring for perfect glare control achieve ideal illumination with a personal touch.

[www.oktalite.com/limba](http://www.oktalite.com/limba)



#### **In.Vola LED**

In.Vola LED suspended luminaires with translucent, coloured shade attract the attention of employees and visitors and simultaneously represent the company with attractive and easily customisable design. The shade is available in two shapes and can be adapted on request to the corporate CD.

[www.oktalite.com/invola](http://www.oktalite.com/invola)





## MEETING POINTS

HIGH QUALITY OF  
LIGHT TO SUPPORT  
COMMUNICATION





### **The best ideas are created through exchange**

Informal exchange between colleagues is vital for companies. Meeting points are places of encounter, which are ideal for spontaneous talks or short-notice team discussions. They offer space for short, efficient meetings with highly precise results. The furniture and infrastructure can support this exchange of information and creativity. Lighting is an important partner for such meetings, it seamlessly extends the design of the complete office, supports inspiration and creates a relaxed atmosphere. High quality of light and individual light settings (Human Centric Lighting) discretely boost well-being, so that the stress of the office is hardly noticed.

## MEETING POINTS

HIGH QUALITY OF  
LIGHT TO SUPPORT  
COMMUNICATION





#### **Sonnos LED**

One luminaire range and countless options: Sonnos LED downlights provide high quality general lighting in offices, and thanks to their different designs and mounting options can be ideally integrated into individual office designs.

[www.trilux.com/sonnos-led](http://www.trilux.com/sonnos-led)



#### **Inplana/Onplana LED**

Inplana and Onplana LED provide glare-controlled planar light for the first time in the downlight sector. The luminaires blend ideally into all surroundings thanks to their modern, purist design. Also suitable for wall mounting due to minimised direct glare and wide light emission to provide new planning and lighting design options.

[www.trilux.com/inplana-onplana](http://www.trilux.com/inplana-onplana)



#### **Solegra LED**

Ideal for new worlds of work: The flexible Solegra LED range of round luminaires upgrades rooms with its modern design and achieves ideal visual conditions anywhere, ranging from VDU workstations to creative zones. The luminaire is controllable via the LiveLink light management system on request.

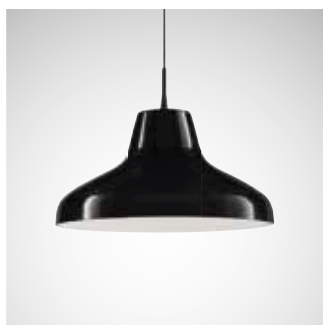
[www.trilux.com/solegra-led](http://www.trilux.com/solegra-led)



#### **Lateralo Ring LED**

Maximum functionality paired with a prestigious design – the Lateralo Ring LED. The interplay of direct and indirect light components provides maximum visual comfort and illuminates rooms brightly, softly and without shadows. The timeless design means it is also an eye-catcher in switched off state.

[www.trilux.com/lateralo-ring-led](http://www.trilux.com/lateralo-ring-led)



#### **Limba LED**

With its timeless vintage look, individual style options and modern lighting technology, Limba LED creates unique and intelligently designed ambiances. A wide selection of LED elements and an opal acrylic ring for perfect glare control achieve ideal illumination with a personal touch.

[www.oktalite.com/limba](http://www.oktalite.com/limba)



#### **In.Vola LED**

In.Vola LED suspended luminaires with translucent, coloured shade attract the attention of employees and visitors and simultaneously represent the company with attractive and easily customisable design. The shade is available in two shapes and can be adapted on request to the corporate CD.

[www.oktalite.com/invola](http://www.oktalite.com/invola)



#### **Arimo Slim Sky LED**

The design of the new Arimo Slim CDP LED SKY was conceived with an emphasis on classic, square lay-in ceilings. With its three-dimensional quality the luminaire gives the impression of a recessed rooflight – this helps to break open the often rigid spatial effect of grid ceilings. The result is optimum lighting conditions and an office atmosphere with a genuine wow-effect.

[www.trilux.com/arimo-slim-sky](http://www.trilux.com/arimo-slim-sky)



## SANITARY FACILITIES

CLEANLY SOLVED





### **Glare-free solutions for sanitary areas**

Sanitary areas should look clean, bright and friendly. The challenge lies in the fact that tiled walls and floors rapidly communicate an excessively bright and sterile impression. Avoiding light reflections on mirrors also requires planning expertise – and the right products. Modern LED technology enables sanitary facilities to be illuminated without glare and it also creates pleasant atmospheres by individually specifying the light colour, for instance. An important fact is that sanitary areas are often only used on an ad-hoc basis, meaning energy costs for lighting can be significantly reduced by intelligent light management systems with presence sensors. Active versions with daylight sequences provide ideal solutions for often windowless sanitary areas.

## SANITARY FACILITIES

CLEANLY SOLVED







#### **Solvan Flow LED**

As a recessed luminaire, Solvan Flow LED not only blends into any surroundings thanks to its flat design but is also enormously flexible. Selectable lumen packages, optical systems and beam characteristics provide a highly diverse lighting solution for sanitary areas.

[www.trilux.com/solvanflow](http://www.trilux.com/solvanflow)



#### **Athenik Ligra Plus LED**

Square, compact and energy-efficient – the Athenik Ligra Plus LED downlight represents modern lighting and maximum visual comfort. The Active model is able to simulate the sequence of daylight thanks to white-white control. This makes the downlight ideal for often windowless sanitary rooms.

[www.trilux.com/athenikligraplus](http://www.trilux.com/athenikligraplus)



#### **Inperla Ligra Plus LED**

Various beam characteristics, luminous flux packages and designs make the Inperla Ligra Plus LED the ideal lighting solution. Active versions featuring white-white control simulate the course of daylight – an ideal solution for windowless sanitary areas.

[www.trilux.com/inperlaligraplus](http://www.trilux.com/inperlaligraplus)



#### **Acuro LED**

The wall-mounted mirror luminaires with IP44 protection emit especially soft light thanks to a finely structured opal diffuser. The Active version is ideal for often windowless sanitary areas, supporting the natural day-night rhythm of people thanks to white-white control.

[www.trilux.com/acuro](http://www.trilux.com/acuro)

# INDOOR LIGHT MANAGEMENT

SIMPLE PLANNING  
RAPID INSTALLATION  
INTUITIVE OPERATION



Download on the  
**App Store**

GET IT ON  
**Google play**

### Intelligent light controls are the future

In order to fully utilise lighting comfort and energy efficiency, customised and individually controlled light is absolutely indispensable. The future therefore belongs to intelligent light management systems.

In the past, complicated installation and operation often hindered access to the world of networked light. LiveLink by TRILUX puts a stop to this. The system enables the intuitive and reliable control of all light points. Only mains and DALI connections are required to install the system. Commissioning becomes effortless thanks to LiveLink – with use cases containing preconfigured rooms for specific applications and including Human Centric Lighting. When setting up larger projects with complex lighting tasks, users can take advantage of the modular service portfolio of TRILUX – keeping the TRILUX brand promise of SIMPLIFY YOUR LIGHT.

The LiveLink radio solution enables quick and simple light management system installations even in difficult building situations. If the building cabling has no 2-core DALI control lines, LiveLink can also be operated wirelessly. In such applications, communication between the controller and luminaires uses the ZigBee radio standard.



#### Simple design

The LiveLink Control app on tablet or smartphone simplifies the lighting design process by using preset room configurations (use cases). Project-specific settings can be configured by TRILUX on request – these are then made available in the TRILUX portal.



#### Integrating HCL

Special use cases are also available for Human Centric Lighting purposes containing colour sequences specifically adapted for the application. Just a few clicks suffice. Installing HCL was never as convenient.



#### Rapid installation

The LiveLink system and system components are simply wired together via DALI. Programming and commissioning are carried out simply and in a time-saving way with a graphic user interface on mobile iOS and Android end devices.



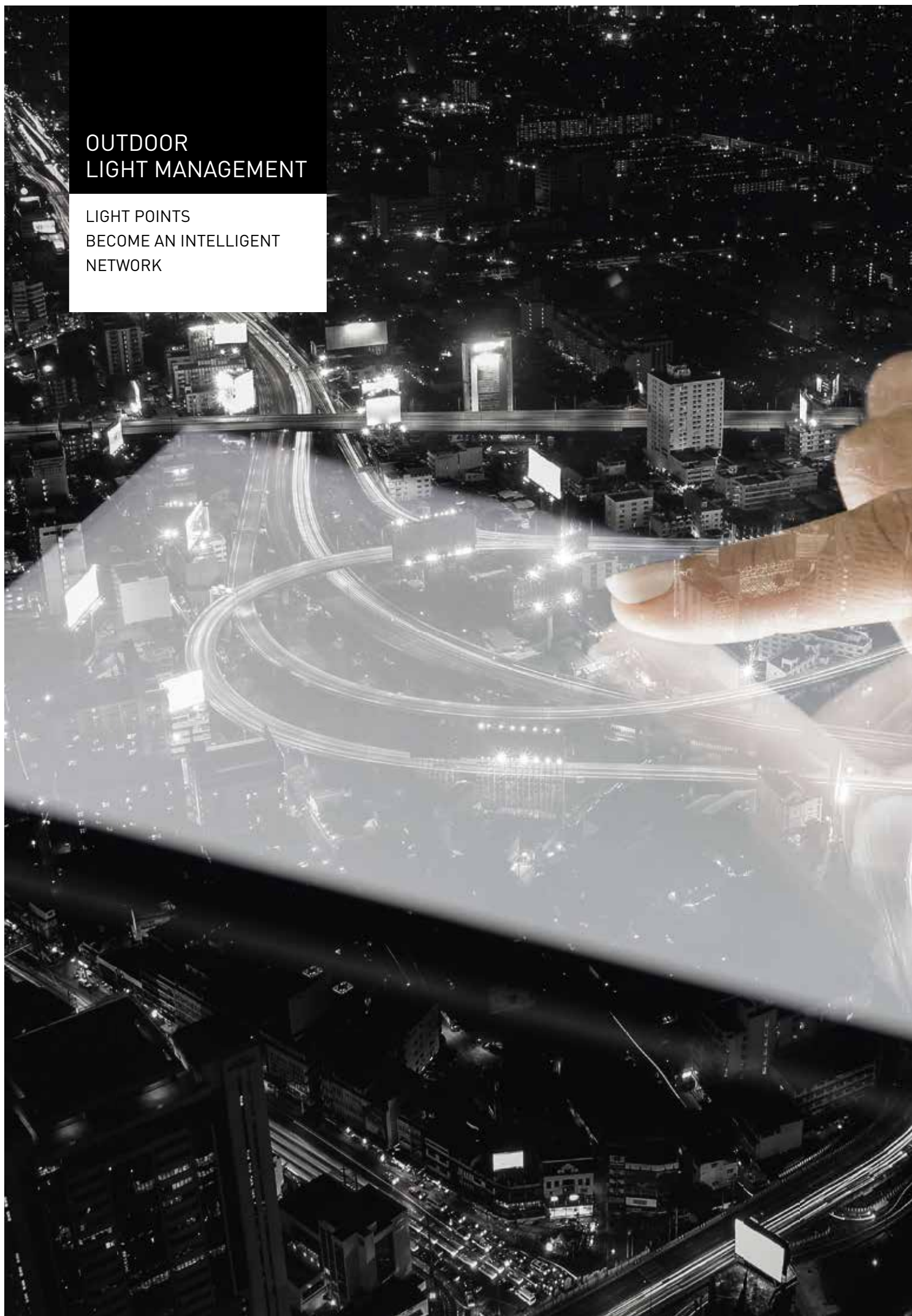
#### Intuitive operation

In practice there are many functions automatically implemented by LiveLink: these include controlling the lighting level with daylight-dependent regulation and presence detection. If further light scenes are desired the luminaires can be controlled via smartphone or classically via a push-button. It could hardly be any simpler.



# OUTDOOR LIGHT MANAGEMENT

LIGHT POINTS  
BECOME AN INTELLIGENT  
NETWORK



## **TRILUX Outdoor light management systems – for tomorrow's Smart Cities**

Broadband internet access, mobile data, the Internet of Things and cloud computing – the future is networked and connectivity is one of the major trends in the near future.

The use of TRILUX LED luminaires with light management systems enables savings exceeding 80% compared to obsolete lighting installations. The remote management and control of streetlighting offers greater efficiency and increased public safety. Various dimming profiles and other settings can also be created and modified at any time and from anywhere.

### **Your advantages with TRILUX Outdoor light management systems**



#### **Smart City-compatible**

Open interfaces (APIs) enable the integration of third-party software and hardware.



#### **Light according to needs**

The sensors help save more energy and avoid unnecessary light pollution.



#### **Control, regulate, monitor**

Simple remote management of the complete lighting system via a web-based software.



#### **Safe communication**

Protected against system failures and unauthorised access.



#### **Simple installation**

Quick installation and commissioning (with GPS location).  
Modifications to the existing lighting infrastructure are not required.



#### **Proactive maintenance**

Automatic communication of error reports and status reports via the web-based software.



#### **Software features**

- Readout of current luminaire status
- Setting of dimming profiles
- Grouping of luminaires
- Display and positioning of luminaires on a map
- Energy consumption readout for individual luminaires or luminaire groups
- Display of current traffic density

## LIGHTING SOLUTIONS & SERVICES

FULL SERVICE FOR  
YOUR PROJECT





## Achieving perfect light was never simpler

The lighting market has changed enormously due to LED transformation, increasing digitalisation and social mega-trends such as connectivity and big data. On the one hand this provides various opportunities; on the other, lighting solutions are becoming increasingly complex and their selection, configuration and operation more complicated.

**TRILUX makes this complexity manageable thanks to intelligent solutions bringing simplicity to connectivity, energy efficiency and quality of light, and also by offering a wide range of customer-oriented services.**



### ORIENTATION AND SAFETY

Increasingly complex lighting solutions mean that the knowledge applied over many years is changing. They also place new demands on all participants with regard to the efficiency, quality, performance and service life of lighting solutions. Furthermore, new challenges placed on the building flow into the planning process – as a result future construction projects will not only become more intelligent but will also be designed more sustainably.

**We clarify together with you which technologies and products are most suited to your needs.**



### LIGHTENING THE LOAD

Large building and refurbishment projects demand foresight and a corresponding overview, as well as appropriate resources with the planning, implementation and operation of a new building. Upon request we take on all tasks concerning lighting, ranging from technological consultation and custom financing concepts to installation work and extensive digital services.

**This provides you with the required flexibility to concentrate on your own business.**



### SAVINGS

An efficiently planned lighting solution not only considers costs, savings potential and financing options. TRILUX offers various financing models to customers who wish to realise their systems in a balance-neutral way to protect their own capital and maintain their handling flexibility.

**We draw up individual concepts in agreement with you to fulfil your precise requirements.**



### ENVIRONMENTAL AWARENESS AND SUSTAINABILITY

The lighting solution is a central part of sustainable building management and has a major influence on gaining certifications such as Green Building. Greenhouse gas emissions can be sustainably reduced via environmentally protective lighting installations based on state-of-the-art LED technology and intelligent control solutions. Digital services from TRILUX also enable the monitoring of operationally relevant data such as energy consumption during operation.

**We are also available to you after commissioning.**

## INFORMATION & CONSULTATION



### The perfect solution made easy

All services regarding planning, potential savings, financing, applying for subsidies and the realisation of customised lighting concepts.

- Expert consultation to suit the requirements whether for the system, technology, products, interfaces and services
- Energy and cost efficiency calculation
- Full information concerning lighting: ranging from general information about energy efficiency and the benefits and disadvantages of different lighting solutions to the possibility of configuring the lighting system yourself online

## FINANCING



### Various possibilities and extensive advice

LED renting or purchase, hire purchase or leasing? Together with you we develop your ideal financing solution, whether for new building constructions or refurbishments.

- Balance-neutral realisation of lighting projects without initial investment: greater scope for action by protecting the equity capital.
- By reducing operating costs a new lighting solution can often be cost-neutral from the first day.
- Renting instead of purchase: customers can rent the light actually needed by a new lighting system for a monthly rate.

## TECHNICAL SERVICES



### **From disassembly to commissioning – we can do that.**

The following applies with refurbishments: The existing lighting installation must be correctly disassembled and disposed of before the new system can be installed.

- Disassembly and correct disposal of the old system: we would be glad to work with a regional installation partner.
- Installation and commissioning of your new lighting installation, including programming and commissioning of a light management system such as LiveLink.

## PROJECT MANAGEMENT



### **Coordination of large projects for customer ease**

Today's modern buildings must be intelligent, sustainable and flexible. They are often individually adapted to the needs of the client.

- Full-service principal for the customer: TRILUX acts as a general contractor with all lighting issues.
- Implementation of all coordination tasks by TRILUX Project Management: ranging from lighting design consultation to the integration of various lighting-related systems such as indoor, outdoor and emergency lighting, light management including sensor technology, distribution, supply, mounting, installation and maintenance.



# TRILUX AKADEMIE

THEME DAYS  
SEMINARS  
WEBINARS





The TRILUX Akademie is the qualification partner for everyone professionally concerned with light. Light becomes intelligent, activating, relaxing or transforms into experiences. The latest specialist knowledge is therefore vital to exploit the possibilities created by new products and applications.

The TRILUX Akademie communicates technical knowledge in the form of various educational formats for training needs. The wide-ranging programme of theme days, seminars and webinars enables even experienced lighting professionals to stay up-to-date. For those new to the profession, we offer courses that establish a solid foundation for subsequent activities. We also support experienced lighting professionals with a wide range of practical training events to an advanced level.



# TRILUX PORTAL

YOUR ACCESS TO THE DIGITAL  
WORLD OF TRILUX



DIGITAL  
SERVICES



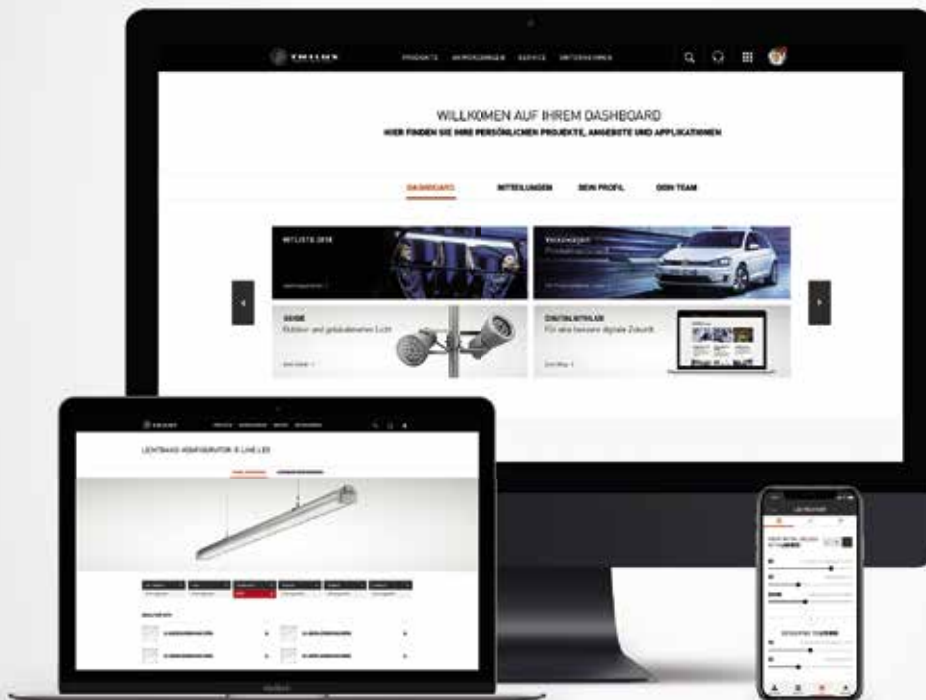
USEFUL  
AIDS



SIMPLE  
PROJECT WORK



SMART  
CONFIGURATORS





The TRILUX Portal is your central login for the latest tools and services with which TRILUX simplifies your work. All functions are available to you at any time – whether you're in the office, on the road or at home. The intuitive user interface has once again been optimised and supports you on desktop PCs, tablets and smartphones.



#### **DIGITAL SERVICES**

##### **Light management and connectivity**

- After simple registration, follow the energy consumption of your lighting system in the cloud.
- Take advantage of the new energy monitoring and light monitoring connectivity services for monitoring and maintenance of the networked lighting.



#### **USEFUL AIDS**

##### **From watchlists to the Efficiency Calculator**

- Save products to your watchlist or directly in your individual project.
- Use the product comparison function to simply select the most suitable product.
- Calculate the specific maintenance factor with the TRILUX Lifetime Calculator or calculate investment and operating costs as well as savings potential with the TRILUX Energy Efficiency Calculator ([www.trilux.com/efficiency-calculator](http://www.trilux.com/efficiency-calculator)).
- The TRILUX Lighting Practice publication provides you with extensive lighting knowledge and helpful support for working with light in a most practical way.



#### **SIMPLE PROJECT WORK**

##### **Manage your projects quickly and simply**

- Create a project quickly and simply and equip it with the desired TRILUX luminaires. The Portal does the rest – it compiles all necessary documents for you.
- Invite other people to process and edit the various project phases with you.



#### **SMART CONFIGURATORS**

##### **Simple creation with just a few clicks**

- Even complex continuous line constructions are created in a simple way with just a few clicks.
- Our configurators enable targeted product selection according to your specific needs.

## PARKING AREAS



**Nextrema G3 LED**  
[www.trilux.com/nextremag3](http://www.trilux.com/nextremag3)



**Lumantix LED**  
[www.trilux.com/lumantix-led](http://www.trilux.com/lumantix-led)

## PATHS



**Skeo Q LED bollard**  
[www.trilux.com/skeo-q-b](http://www.trilux.com/skeo-q-b)



**8841... LED**  
[www.trilux.com/8841](http://www.trilux.com/8841)

## FACADES



**Skeo Circ LED**  
[www.trilux.com/skeo-circ-led](http://www.trilux.com/skeo-circ-led)



**Skeo Pura LED**  
[www.trilux.com/skeo-pura-led](http://www.trilux.com/skeo-pura-led)

## OUTDOOR ENTRANCE AREAS



**Skeo Circ LED**  
[www.trilux.com/skeo-circ-led](http://www.trilux.com/skeo-circ-led)



**Skeo Pura LED**  
[www.trilux.com/skeo-pura-led](http://www.trilux.com/skeo-pura-led)

## INDOOR ENTRANCE AREAS



**Solegra LED**  
[www.trilux.com/solegra-led](http://www.trilux.com/solegra-led)



**74R/Q LED**  
[www.trilux.com/74rq-led](http://www.trilux.com/74rq-led)

Products shown represent only a small selection of our lighting solutions. See the complete portfolio of products at [www.trilux.com](http://www.trilux.com).  
We would be happy to help you to achieve the right solution for your individual office project. Simply contact us!



**ConStela LED**  
[www.trilux.com/constela](http://www.trilux.com/constela)



**Convia LED**  
[www.trilux.com/convia](http://www.trilux.com/convia)



**Lumena Star  
40/70 LED**  
[www.trilux.com/lumenastar](http://www.trilux.com/lumenastar)



**Lumega IQ  
50/70/90 LED**  
[www.trilux.com/lumega iq](http://www.trilux.com/lumega iq)



**Cuvia 40/60 LED**  
[www.trilux.com/cuvia40](http://www.trilux.com/cuvia40)  
[www.trilux.com/cuvia60](http://www.trilux.com/cuvia60)



**Viatana LED**  
[www.trilux.com/viatana](http://www.trilux.com/viatana)



**8851... LED**  
[www.trilux.com/8851](http://www.trilux.com/8851)



**HS 80 LED**  
[www.trilux.com/hs](http://www.trilux.com/hs)



**8841 LS LED**  
[www.trilux.com/8841 ls-led](http://www.trilux.com/8841 ls-led)



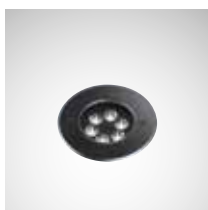
**Altigo G2 LED**  
[www.trilux.com/altigo-led](http://www.trilux.com/altigo-led)



**ConStela LED**  
[www.trilux.com/constela](http://www.trilux.com/constela)



**Skeo Q spotlight LED**  
[www.trilux.com/skeo-q-s](http://www.trilux.com/skeo-q-s)



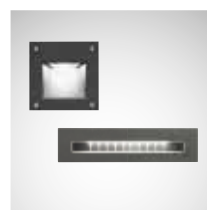
**Lutera  
90/100/200 LED**  
[www.trilux.com/lutera90](http://www.trilux.com/lutera90)  
[www.trilux.com/lutera100](http://www.trilux.com/lutera100)  
[www.trilux.com/lutera200](http://www.trilux.com/lutera200)



**Skeo Q LED/  
Skeo R LED**  
[www.trilux.com/skeo-r-led](http://www.trilux.com/skeo-r-led)  
[www.trilux.com/skeo-q-led](http://www.trilux.com/skeo-q-led)



**Altigo G2 LED**  
[www.trilux.com/altigo-led](http://www.trilux.com/altigo-led)



**Pareda LED/  
Pareda Slim LED**  
[www.trilux.com/pareda](http://www.trilux.com/pareda)  
[www.trilux.com/pareda-slim-led](http://www.trilux.com/pareda-slim-led)



**Faciella LED**  
[www.trilux.com/faciella-led](http://www.trilux.com/faciella-led)



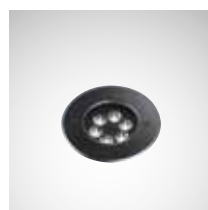
**Skeo Q LED/  
Skeo R LED**  
[www.trilux.com/skeo q](http://www.trilux.com/skeo q)  
[www.trilux.com/skeo r](http://www.trilux.com/skeo r)



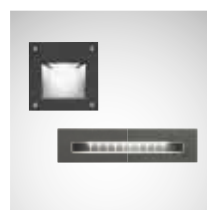
**Altigo G2 LED**  
[www.trilux.com/altigo](http://www.trilux.com/altigo)



**Lutera C LED**  
[www.trilux.com/lutera-c-led](http://www.trilux.com/lutera-c-led)



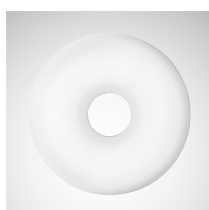
**Lutera  
90/100/200 LED**  
[www.trilux.com/lutera90](http://www.trilux.com/lutera90)  
[www.trilux.com/lutera100](http://www.trilux.com/lutera100)  
[www.trilux.com/lutera200](http://www.trilux.com/lutera200)



**Pareda LED/  
Pareda Slim LED**  
[www.trilux.com/pareda](http://www.trilux.com/pareda)  
[www.trilux.com/pareda-slim-led](http://www.trilux.com/pareda-slim-led)



**8841... LED**  
[www.trilux.com/8841](http://www.trilux.com/8841)



**Oyamo LED**  
[www.trilux.com/oyamo-led](http://www.trilux.com/oyamo-led)



**Sonnos LED**  
[www.trilux.com/sonnos-led](http://www.trilux.com/sonnos-led)



**Parelia LED**  
[www.trilux.com/parelia-led](http://www.trilux.com/parelia-led)



**Inplana/Onplana LED**  
[www.trilux.com/inplana-onplana](http://www.trilux.com/inplana-onplana)



**Lateralo Ring LED**  
[www.trilux.com/lateralo-ring-led](http://www.trilux.com/lateralo-ring-led)



## CORRIDORS AND STAIRWAYS

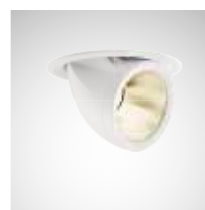


**Polaron IQ LED**  
[www.trilux.com/polaroniq](http://www.trilux.com/polaroniq)



**Inplana/Onplana LED**  
[www.trilux.com/inplana-onplana](http://www.trilux.com/inplana-onplana)

## EXHIBITION AREAS



**Quira LED**  
[www.oktalite.com/quira](http://www.oktalite.com/quira)  
[www.oktalite.com/quira-plus](http://www.oktalite.com/quira-plus)



**Sonnos LED**  
[www.trilux.com/sonnos-led](http://www.trilux.com/sonnos-led)

## CLASSIC OFFICES



**Parelia LED**  
[www.trilux.com/parelia-led](http://www.trilux.com/parelia-led)



**Luceo Slim LED**  
[www.trilux.com/luceo-slim-led](http://www.trilux.com/luceo-slim-led)

## OPEN SPACES



**Bicult LED**  
[www.trilux.com/bicult-led](http://www.trilux.com/bicult-led)



**Sonnos LED**  
[www.trilux.com/sonnos-led](http://www.trilux.com/sonnos-led)

## HOME OFFICE



**Bicult LED**  
[www.trilux.com/bicult-led](http://www.trilux.com/bicult-led)



**Sonnos LED**  
[www.trilux.com/sonnos-led](http://www.trilux.com/sonnos-led)

Products shown represent only a small selection of our lighting solutions. See the complete portfolio of products at [www.trilux.com](http://www.trilux.com).  
We would be happy to help you to achieve the right solution for your individual office project. Simply contact us!



**Sonnos LED**

[www.trilux.com/sonnos-led](http://www.trilux.com/sonnos-led)



**Arimo Slim Sky LED**

[www.trilux.com/arimo-slim-sky](http://www.trilux.com/arimo-slim-sky)



**74RS LED**

[www.trilux.com/74rs-led](http://www.trilux.com/74rs-led)



**74R/Q LED**

[www.trilux.com/74rq-led](http://www.trilux.com/74rq-led)



**LC67 LED**

[www.trilux.com/lc67](http://www.trilux.com/lc67)



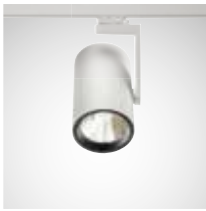
**Solván Flow LED**

[www.trilux.com/solvanflow](http://www.trilux.com/solvanflow)



**Solegra LED**

[www.trilux.com/solegra-led](http://www.trilux.com/solegra-led)



**Canilo Plus LED  
surface-mounted  
directional spotlight**

[www.oktalite.com/  
canilo-plus](http://www.oktalite.com/canilo-plus)



**Canilo Plus LED  
pendant luminaire**

[www.oktalite.com/  
canilo-plus](http://www.oktalite.com/canilo-plus)



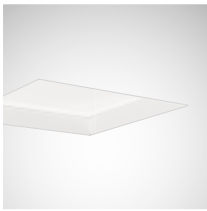
**Limba LED**

[www.oktalite.com/limba](http://www.oktalite.com/limba)



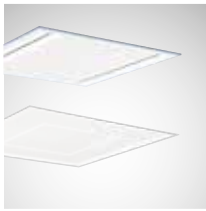
**In.Vola LED**

[www.oktalite.com/invola](http://www.oktalite.com/invola)



**Arimo Slim Sky LED**

[www.trilux.com/  
arimo-slim-sky](http://www.trilux.com/arimo-slim-sky)



**Arimo Slim MRX  
LED, Arimo Slim CDP  
and CDP-X LED**

[www.trilux.com/arimosmrx](http://www.trilux.com/arimosmrx)  
[www.trilux.com/arimoscdpx](http://www.trilux.com/arimoscdpx)



**Sonnos LED**

[www.trilux.com/sonnos-led](http://www.trilux.com/sonnos-led)



**Bicult LED**

[www.trilux.com/bicult-led](http://www.trilux.com/bicult-led)



**Lunexo H LED**

[www.trilux.com/lunexo](http://www.trilux.com/lunexo)



**Belviso C1 LED**

[www.trilux.com/belvisoc1](http://www.trilux.com/belvisoc1)



**Parelia LED**

[www.trilux.com/parelia-led](http://www.trilux.com/parelia-led)



**So-Tube LED**

[www.trilux.com/so-tube-led](http://www.trilux.com/so-tube-led)



**Arimo Slim Sky LED**

[www.trilux.com/  
arimo-slim-sky](http://www.trilux.com/arimo-slim-sky)



**Limba LED**

[www.oktalite.com/limba](http://www.oktalite.com/limba)



**Solegra LED**

[www.trilux.com/solegra-led](http://www.trilux.com/solegra-led)



**E-Line B19 LED**

[www.trilux.com/e-line-led](http://www.trilux.com/e-line-led)

## COWORKING SPACES



**Bicult LED**  
[www.trilux.com/bicult-led](http://www.trilux.com/bicult-led)



**Sonnos LED**  
[www.trilux.com/sonnos-led](http://www.trilux.com/sonnos-led)

## MEETING POINTS



**Sonnos LED**  
[www.trilux.com/sonnos-led](http://www.trilux.com/sonnos-led)



**Inplana/Onplana LED**  
[www.trilux.com/inplana-onplana](http://www.trilux.com/inplana-onplana)

## SANITARY FACILITIES



**Solvan Flow LED**  
[www.trilux.com/solvanflow](http://www.trilux.com/solvanflow)



**Athenik Ligra Plus LED**  
[www.trilux.com/atheniktigraplus](http://www.trilux.com/atheniktigraplus)



Products shown represent only a small selection of our lighting solutions. See the complete portfolio of products at [www.trilux.com](http://www.trilux.com).  
We would be happy to help you to achieve the right solution for your individual office project. Simply contact us!



**Solegra LED**

[www.trilux.com/solegra-led](http://www.trilux.com/solegra-led)



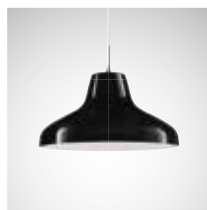
**So-Tube LED**

[www.trilux.com/so-tube-led](http://www.trilux.com/so-tube-led)



**Inplana/Onplana LED**

[www.trilux.com/inplana-onplana](http://www.trilux.com/inplana-onplana)



**Limba LED**

[www.oktalite.com/limba](http://www.oktalite.com/limba)



**In.Vola LED**

[www.oktalite.com/invola](http://www.oktalite.com/invola)



**Solegra LED**

[www.trilux.com/solegra-led](http://www.trilux.com/solegra-led)



**Lateralo Ring LED**

[www.trilux.com/lateralo-ring-led](http://www.trilux.com/lateralo-ring-led)



**Limba LED**

[www.oktalite.com/limba](http://www.oktalite.com/limba)



**In.Vola LED**

[www.oktalite.com/invola](http://www.oktalite.com/invola)



**Arimo Slim Sky LED**

[www.trilux.com/arimo-slim-sky](http://www.trilux.com/arimo-slim-sky)



**Inperla Ligra Plus LED**

[www.trilux.com/inperlaligraplus](http://www.trilux.com/inperlaligraplus)



**Acuro LED**

[www.trilux.com/acuro](http://www.trilux.com/acuro)

# CONTACTS

**TRILUX GmbH & Co. KG**

Heidestraße · D-59759 Arnsberg  
Postfach 19 60 · D-59753 Arnsberg  
Tel. +49 29 32.3 01-0  
Fax +49 29 32.3 01-3 75  
sales@trilux.com · www.trilux.com

**PROLJUS AB**

Kyrkogatan 18  
57697 Vrigstad  
SWEDEN  
Tel. +46 36 13 94 90  
info@proljus.se · www.proljus.se





